
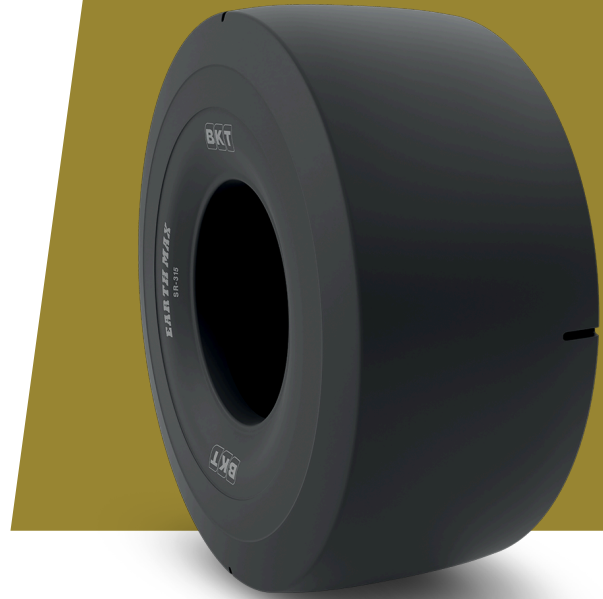


# EARTHMAX SR 315

<b>TIRE SIZE</b>	15.5 R 25
<b>UM</b>	IS STANDARD
<b>CONSTRUCTION</b>	 RADIAL
<b>MACHINERY</b>	GRUVLASTMASKIN
<b>VERSION</b>	CUT RESISTANT COMPOUND
<b>TIRE TYPE</b>	TL
<b>LI/SS</b>	182 A2



## DIMENSIONER IS STANDARD

<b>OD (MM)</b>	1265	<b>TRA CODE</b>	L3S
<b>SLR (MM)</b>	566	<b>STAR RATING</b>	★★★
<b>RC (MM)</b>	3822		
<b>RIM REC</b>	12.00/1.3		

## LOAD CAPACITY (KG/TIRE)

<b>KM/H / BAR</b>	<b>8.00</b>
10	8500

Rolling Circumference & SLR values are at rated Load and inflation pressure. These values may vary at different Load and pressure condition.