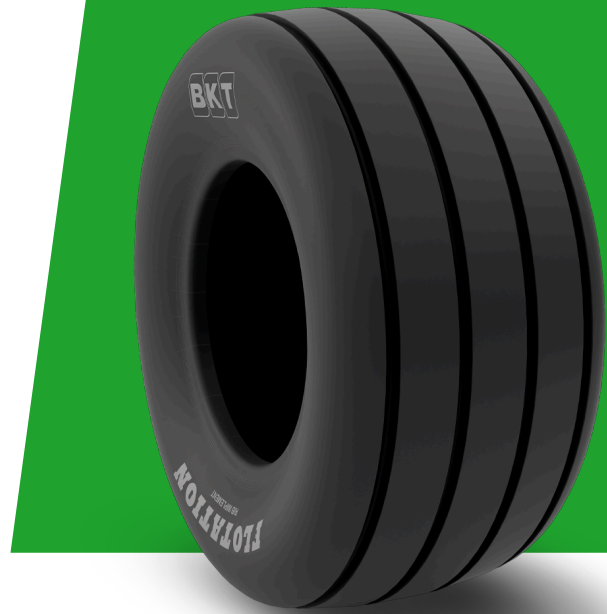


# FLOTATION RIB IMPLEMENT

<b>TIRE SIZE</b>	<b>31X13.50 - 15</b>
<b>UM</b>	IS STANDARD
<b>CONSTRUCTION</b>	❖ BIAS
<b>MACHINERY</b>	ENFARDADEIRA DE FENO / IMPLEMENTOS AGRÍCOLAS / REBOQUE / CEIFEIRA / IMPLEMENTOS AGRÍCOLAS
<b>VERSÃO</b>	STANDARD
<b>TIRE TYPE</b>	TL
<b>LI/SS</b>	124 B



## DIMENSÕES IS STANDARD

<b>SW (MM)</b>	360	<b>RIM REC</b>	10 LB
<b>OD (MM)</b>	780	<b>ECE</b>	E11-106R-003389
<b>SLR (MM)</b>	374	<b>PR</b>	12
<b>RC (MM)</b>	2398		

## LOAD CAPACITY (KG/TIRE)

<b>KM/H / BAR</b>	<b>5.20</b>
50	1600

Rolling Circumference & SLR values are at rated Load and inflation pressure. These values may vary at different Load and pressure condition.