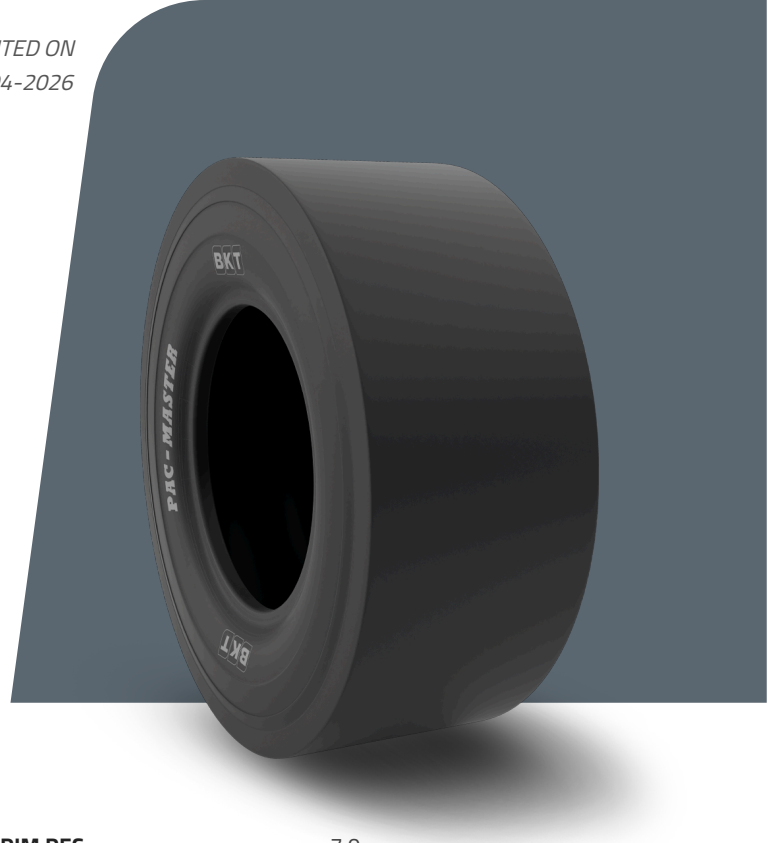


# PAC MASTER

<b>TIRE SIZE</b>	<b>9.00 - 20</b>
<b>UM</b>	IS STANDARD
<b>CONSTRUCTION</b>	
<b>MACHINERY</b>	COMPACTOR
<b>VERSION</b>	STANDARD
<b>TIRE TYPE</b>	TT



## DIMENSIONS IS STANDARD

<b>SW (MM)</b>	275	<b>RIM REC</b>	7.0
<b>OD (MM)</b>	1016	<b>RIM ALT</b>	7.5
<b>SLR (MM)</b>	471	<b>ECE</b>	E11-106R-005358
<b>RC (MM)</b>	3107	<b>PR</b>	12

## LOAD CAPACITY (KG/TIRE)

<b>KM/H / BAR</b>	<b>6.25</b>
10	4000
15	3150

Rolling Circumference & SLR values are at rated Load and inflation pressure. These values may vary at different Load and pressure condition.