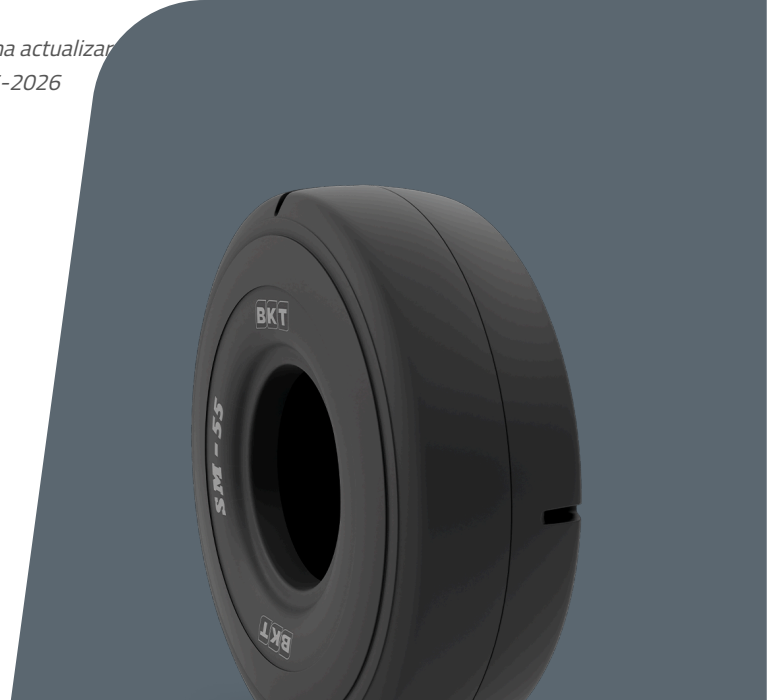


SM 54 IND-4S

TIRE SIZE	16.00 - 25
UM	IS STANDARD
CONSTRUCTION	❖ BIAS
MACHINERY	STIVUITOR DE CONTAINERE
VERSION	INDUSTRIAL
TIRE TYPE	TL



DIMENSIUNI IS STANDARD

OD (MM)	1470	RIM ALT	13.00/2.0
SLR (MM)	676	PR	32
RC (MM)	4354	TRA CODE	L4S
RIM REC	11.25/2.0		

LOAD CAPACITY (KG/TIRE)

KM/H / BAR	10.00
10	16875

Rolling Circumference & SLR values are at rated Load and inflation pressure. These values may vary at different Load and pressure condition.