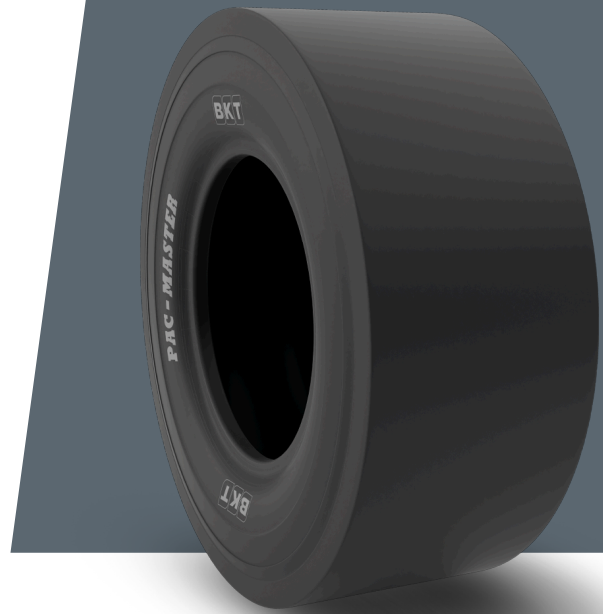


PAC MASTER

9.00 - 20

UM	US STANDARD
CONSTRUCTION	BIAS
MACHINERY	KOMPAKTÖR
VERSION	STANDARD
TIRE TYPE	TT



UNDEFINED US STANDARD

USA CODE	94002627	RC (IN)	122.3
SW (IN)	10.8	RIM REC	7.0
OD (IN)	40.0	RIM ALT	7.5
SLR (IN)	18.5	ECE	E11-106R-005358

LOAD CAPACITY (LBS/TIRE)

MPH / PSI	91
5	8800
10	6940

Rolling Circumference & SLR values are at rated Load and inflation pressure. These values may vary at different Load and pressure condition.