
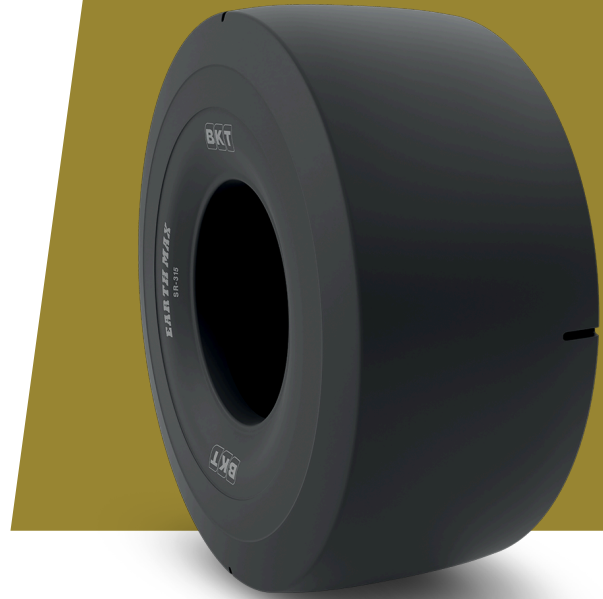


# EARTHMAX SR 315

<b>TIRE SIZE</b>	<b>26.5 R 29</b>
<b>UM</b>	US STANDARD
<b>CONSTRUCTION</b>	 RADIAL
<b>MACHINERY</b>	GRUVLASTMASKIN
<b>VERSION</b>	CUT RESISTANT COMPOUND
<b>TIRE TYPE</b>	TL
<b>LI/SS</b>	217 A2



## DIMENSIONER US STANDARD

<b>USA CODE</b>	94070787	<b>RIM REC</b>	22.00/3.0
<b>OD (IN)</b>	73.4	<b>TRA CODE</b>	L3S
<b>SLR (IN)</b>	32.7	<b>STAR RATING</b>	★★★
<b>RC (IN)</b>	221.9		

## LOAD CAPACITY (LBS/TIRE)

MPH / PSI	98	102	105	109	112	116
5	44100	45400	46700	48100	49400	50700

Rolling Circumference & SLR values are at rated Load and inflation pressure. These values may vary at different Load and pressure condition.