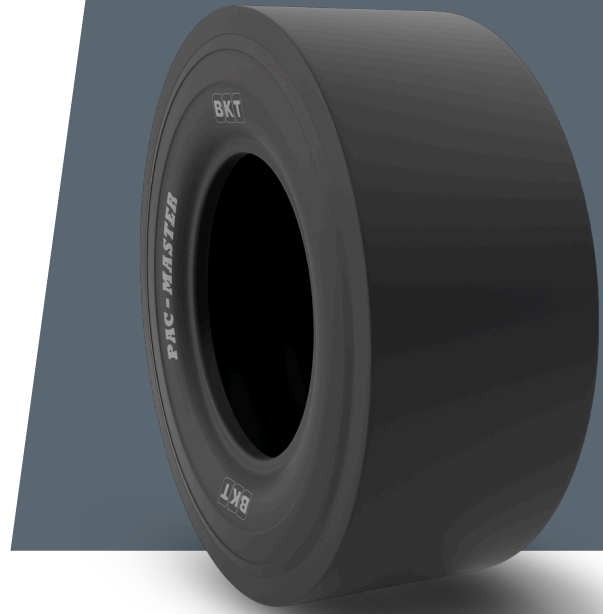


# PAC MASTER

**11.00 - 20**

<b>UM</b>	US STANDARD
<b>CONSTRUCTION</b>	❖ BIAS
<b>MACHINERY</b>	KOMPAKTÖR
<b>VERSION</b>	SPECIAL
<b>TIRE TYPE</b>	TT



## UNDEFINED US STANDARD

<b>USA CODE</b>	94067169	<b>RC (IN)</b>	130.3
<b>SW (IN)</b>	11.5	<b>RIM REC</b>	8.0
<b>OD (IN)</b>	42.1	<b>RIM ALT</b>	8.5
<b>SLR (IN)</b>	19.4	<b>ECE</b>	E11-106R-006177

## LOAD CAPACITY (LBS/TIRE)

<b>MPH / PSI</b>	<b>120</b>
5	12800
10	10200

Rolling Circumference & SLR values are at rated Load and inflation pressure. These values may vary at different Load and pressure condition.