
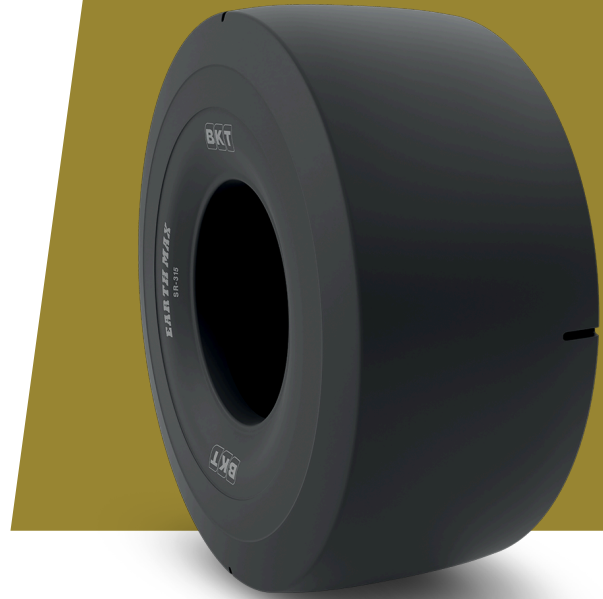


EARTHMAX SR 315

TIRE SIZE	26.5 R 29
UM	IS STANDARD
CONSTRUCTION	 RADIAL
MACHINERY	CARREGADORA LHD
VERSÃO	CUT RESISTANT COMPOUND
TIRE TYPE	TL
LI/SS	211 A2



DIMENSÕES IS STANDARD

OD (MM)	1865	TRA CODE	L3S
SLR (MM)	830	STAR RATING	★★
RC (MM)	5635		
RIM REC	22.00/3.0		

LOAD CAPACITY (KG/TIRE)

KM/H / BAR	5.25	5.50	5.75	6.00	6.25	6.50
10	16500	17500	18000	18500	19000	19500

Rolling Circumference & SLR values are at rated Load and inflation pressure. These values may vary at different Load and pressure condition.