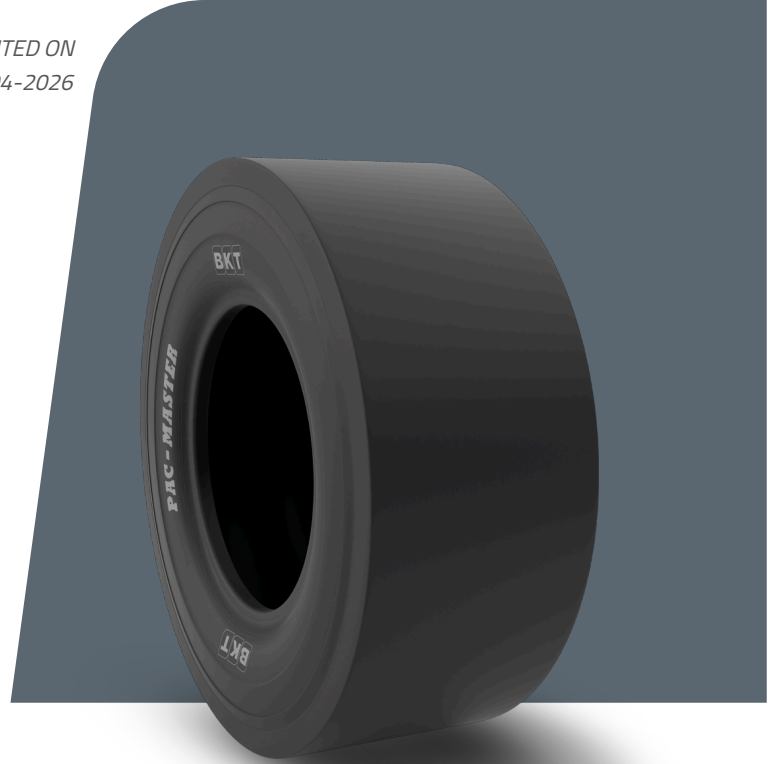


PAC MASTER

TIRE SIZE	9.00 - 20
UM	US STANDARD
CONSTRUCTION	BIAS
MACHINERY	COMPATTATORE
VERSIONE	STANDARD
TIRE TYPE	TT



DIMENSIONI US STANDARD

CODICE USA	94002641	RC (IN)	122.3
SW (IN)	10.8	RIM REC	7.0
OD (IN)	40.0	RIM ALT	7.5
SLR (IN)	18.5	ECE	E11-106R-005359

LOAD CAPACITY (LBS/TIRE)

MPH / PSI	105
5	9650
10	7610

Rolling Circumference & SLR values are at rated Load and inflation pressure. These values may vary at different Load and pressure condition.