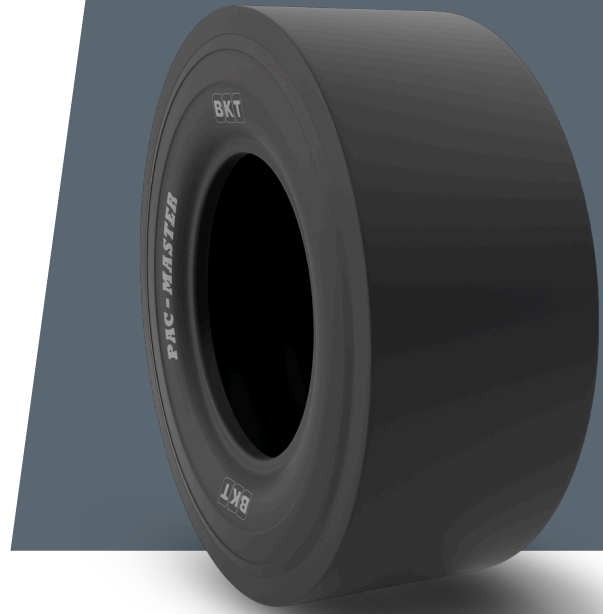


PAC MASTER

9.5/65 - 15

UM	IS STANDARD
CONSTRUCTION	❖ BIAS
MACHINERY	KOMPAKTÖR
VERSION	STANDARD
TIRE TYPE	TT

**UNDEFINED IS STANDARD**

SW (MM)	235	PR	6
OD (MM)	675		
RIM REC	7.0		
ECE	E11-106R-005303		

LOAD CAPACITY (KG/TIRE)

KM/H / BAR	3.25
10	1320
15	1060

Rolling Circumference & SLR values are at rated Load and inflation pressure. These values may vary at different Load and pressure condition.