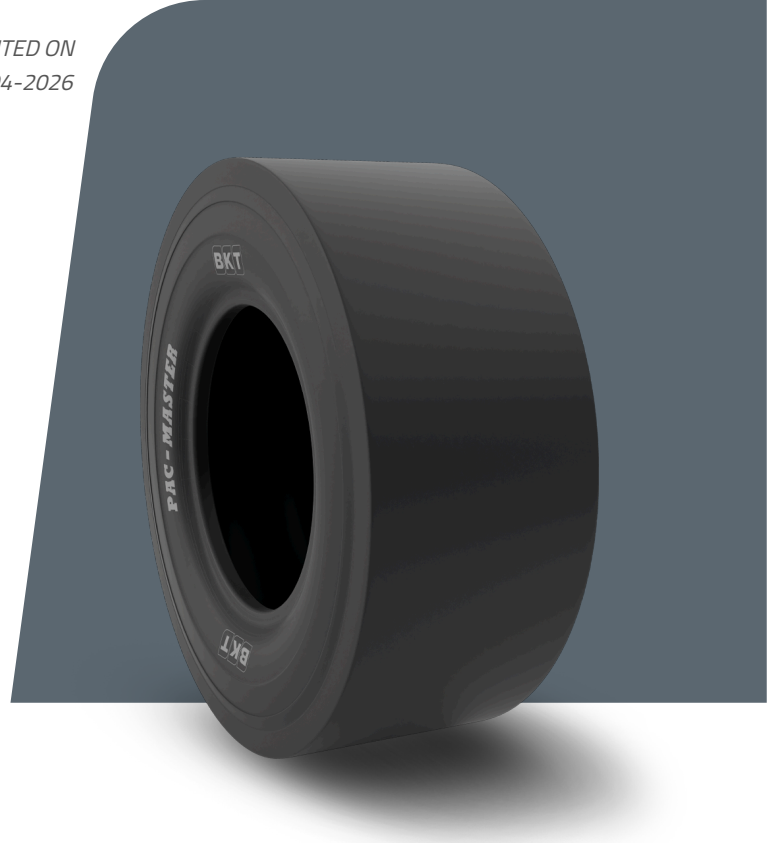


PAC MASTER

| | |
|---------------------|------------------------|
| TIRE SIZE | 11.00 - 20 |
| UM | IS STANDARD |
| CONSTRUCTION | BIAS |
| MACHINERY | УПЛОТНИТЕЛЬНАЯ ТЕХНИКА |
| VERSION | SPECIAL |
| TIRE TYPE | TT |



РАЗМЕРЫ IS STANDARD

| | | | |
|-----------------|------|----------------|-----------------|
| SW (MM) | 291 | RIM REC | 8.0 |
| OD (MM) | 1070 | RIM ALT | 8.5 |
| SLR (MM) | 494 | ECE | E11-106R-006177 |
| RC (MM) | 3310 | PR | 18 |

LOAD CAPACITY (KG/TIRE)

| | |
|-------------------|-------------|
| KM/H / BAR | 8.25 |
| 10 | 5800 |
| 15 | 4625 |

Rolling Circumference & SLR values are at rated Load and inflation pressure. These values may vary at different Load and pressure condition.