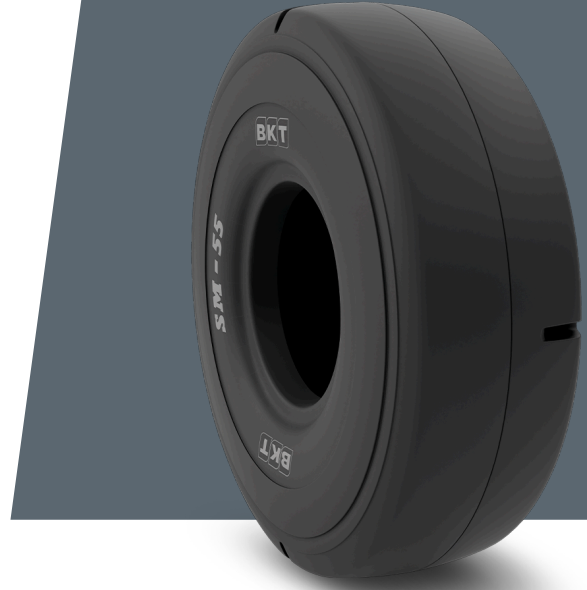


SM 55 IND-5S

12.00 - 24

UM	IS STANDARD
CONSTRUCTION	BIAS
MACHINERY	KONTEYNER TAŞIYICI
VERSION	PORT INDUSTRIAL
TIRE TYPE	TT



UNDEFINED IS STANDARD

OD (MM)	1275	RIM ALT	7.33 V; 8; 8.00 V; 8.50 V
SLR (MM)	594	PR	20
RC (MM)	3777	TRA CODE	IND5
RIM REC	8.5		

LOAD CAPACITY (KG/TIRE)

KM/H / BAR	9.90
10	9315

Rolling Circumference & SLR values are at rated Load and inflation pressure. These values may vary at different Load and pressure condition.