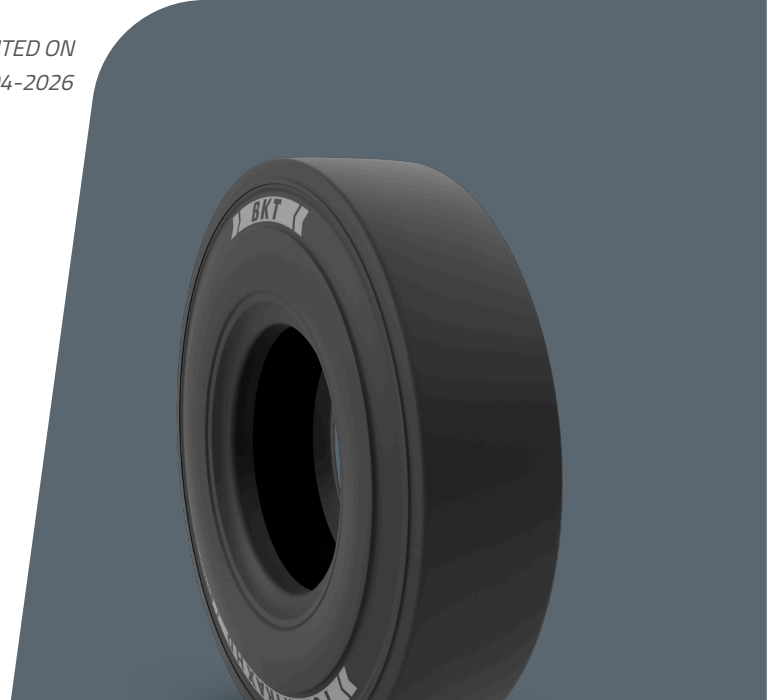


POWER TRAX HD SMOOTH

TIRE SIZE	12.00 - 20
UM	IS STANDARD
CONSTRUCTION	BIAS
MACHINERY	MOVIMENTADOR PARA CONTENTORES / EMPILHADOR
VERSÃO	STANDARD
TIRE TYPE	TT



DIMENSÕES IS STANDARD

SW (MM)	320	ECE	E11-106R-005561
OD (MM)	1150	PR	20
RIM REC	8.50		
RIM ALT	9.0		

LOAD CAPACITY (KG/TIRE)

KM/H / BAR	10.00
25 LOAD WHEEL	9230
25 STEER WHEEL	7100
10 OTHER VEHICLES	9230
25 OTHER VEHICLES	7100
STATIC SIDE LOADER	10720

Rolling Circumference & SLR values are at rated Load and inflation pressure. These values may vary at different Load and pressure condition.