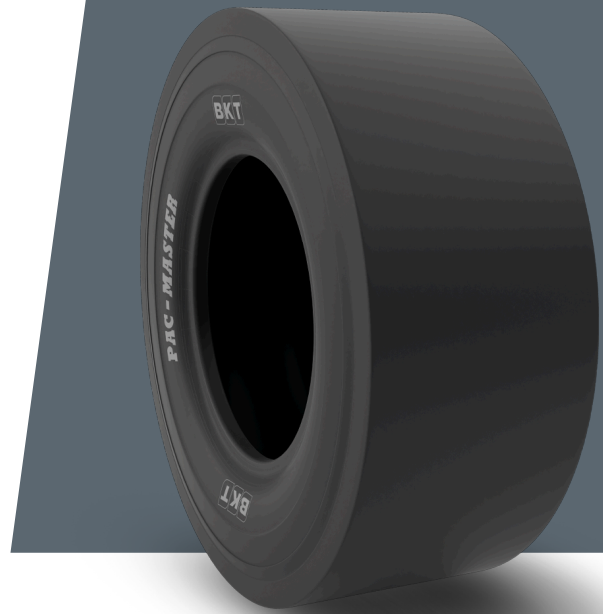


# PAC MASTER

**14/70 - 20**

<b>UM</b>	IS STANDARD
<b>CONSTRUCTION</b>	❖ BIAS
<b>MACHINERY</b>	KOMPAKTÖR
<b>VERSION</b>	STANDARD
<b>TIRE TYPE</b>	TT



## UNDEFINED IS STANDARD

<b>SW (MM)</b>	380
<b>OD (MM)</b>	975
<b>RIM REC</b>	11 TG
<b>PR</b>	12

## LOAD CAPACITY (KG/TIRE)

<b>KM/H / BAR</b>	<b>4.50</b>
10	4000
15	3150

Rolling Circumference & SLR values are at rated Load and inflation pressure. These values may vary at different Load and pressure condition.