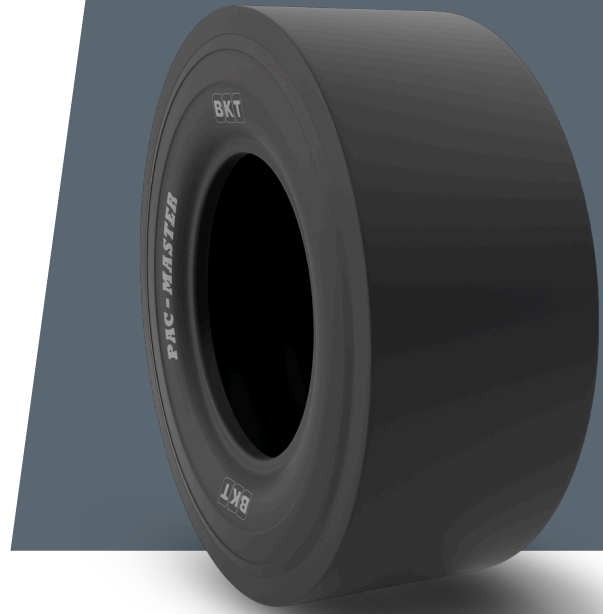


PAC MASTER

10.5/80 - 16

UM	IS STANDARD
CONSTRUCTION	❖ BIAS
MACHINERY	KOMPAKTÖR
VERSION	STANDARD
TIRE TYPE	TL



UNDEFINED IS STANDARD

SW (MM)	275	RIM REC	8.0
OD (MM)	810	ECE	E11-106R-005274
SLR (MM)	382	PR	6
RC (MM)	2480		

LOAD CAPACITY (KG/TIRE)

KM/H / BAR	4.50
10	1850
15	1500

Rolling Circumference & SLR values are at rated Load and inflation pressure. These values may vary at different Load and pressure condition.