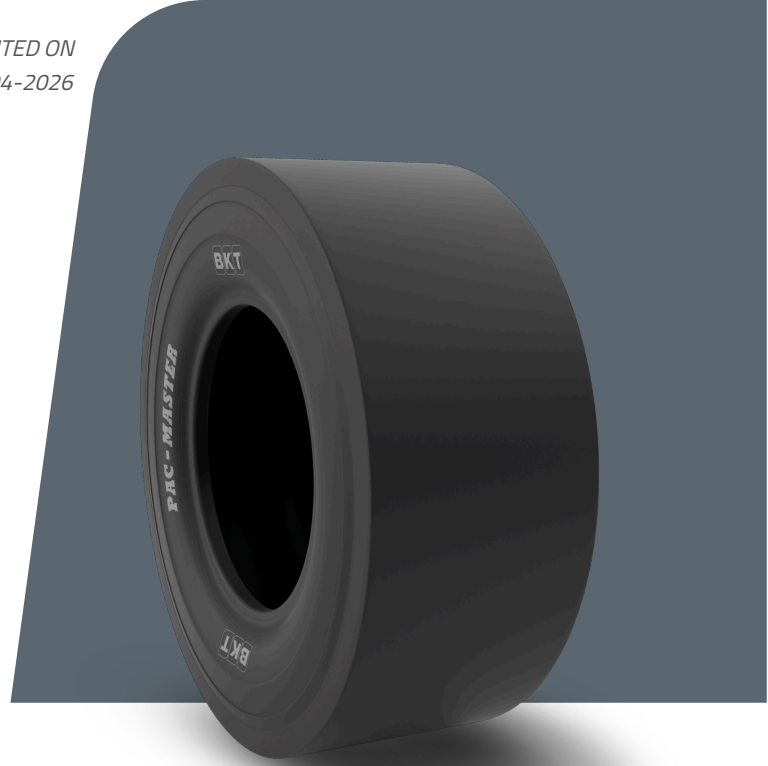


# PAC MASTER

<b>TIRE SIZE</b>	<b>9.00 - 20</b>
<b>UM</b>	US STANDARD
<b>CONSTRUCTION</b>	❖ BIAS
<b>MACHINERY</b>	COMPACTOR
<b>VERSION</b>	STANDARD
<b>TIRE TYPE</b>	TT



## DIMENSIONS US STANDARD

<b>USA CODE</b>	94002627	<b>RC (IN)</b>	122.3
<b>SW (IN)</b>	10.8	<b>RIM REC</b>	7.0
<b>OD (IN)</b>	40.0	<b>RIM ALT</b>	7.5
<b>SLR (IN)</b>	18.5	<b>ECE</b>	E11-106R-005358

## LOAD CAPACITY (LBS/TIRE)

<b>MPH / PSI</b>	<b>91</b>
5	8800
10	6940

Rolling Circumference & SLR values are at rated Load and inflation pressure. These values may vary at different Load and pressure condition.