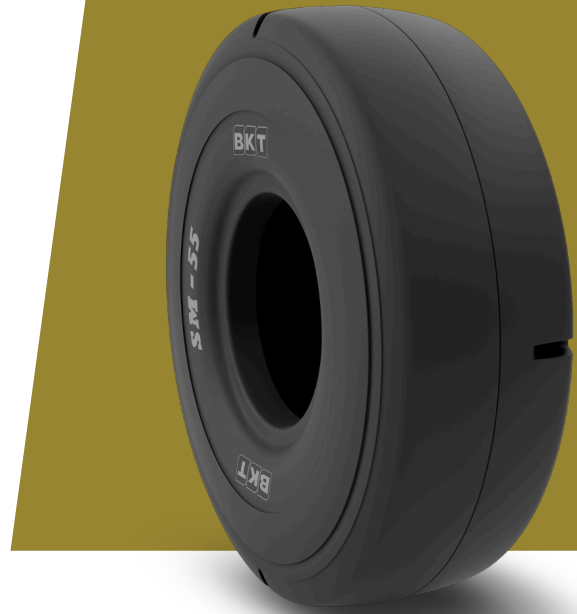


# SM 55 L5S

<b>TIRE SIZE</b>	12.00 - 24
<b>UM</b>	IS STANDARD
<b>CONSTRUCTION</b>	⊠ BIAS
<b>MACHINERY</b>	UNDERJORDISKT GRUVFORDON / DUMPER MED LÅGPROFIL
<b>VERSION</b>	STANDARD
<b>TIRE TYPE</b>	TT



## DIMENSIONER IS STANDARD

<b>OD (MM)</b>	1275	<b>RIM ALT</b>	7.33 V; 8; 8.00 V; 8.50 V
<b>SLR (MM)</b>	594	<b>PR</b>	20
<b>RC (MM)</b>	3777	<b>TRA CODE</b>	L5S
<b>RIM REC</b>	8.5		

## LOAD CAPACITY (KG/TIRE)

KM/H / BAR	8.25
10	6900
15	6005
25	5520

Rolling Circumference & SLR values are at rated Load and inflation pressure. These values may vary at different Load and pressure condition.