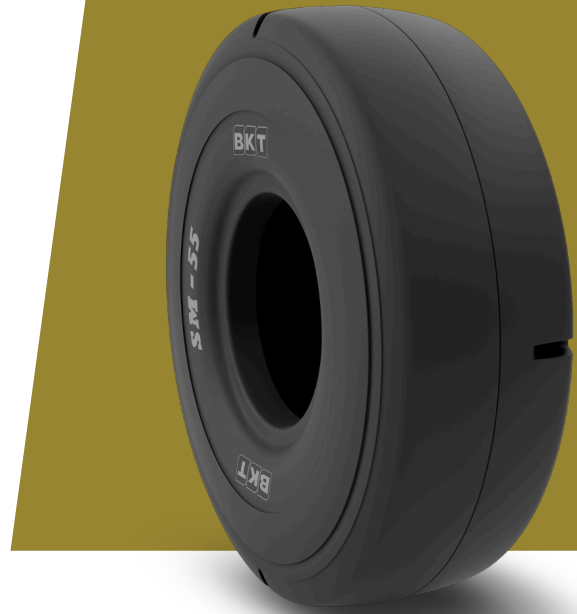


SM 55 L5S

TIRE SIZE	12.00 - 24
UM	IS STANDARD
CONSTRUCTION	BIAS
MACHINERY	VEICULO PARA MINAS SUBTERRÂNEAS / DUMPER DE BAIXO PERFIL
VERSÃO	STANDARD
TIRE TYPE	TT



DIMENSÕES IS STANDARD

OD (MM)	1275	RIM ALT	7.33 V; 8; 8.00 V; 8.50 V
SLR (MM)	594	PR	24
RC (MM)	3777	TRA CODE	L5S
RIM REC	8.5		

LOAD CAPACITY (KG/TIRE)

KM/H / BAR	9.75
10	7600
15	6610
25	6080

Rolling Circumference & SLR values are at rated Load and inflation pressure. These values may vary at different Load and pressure condition.