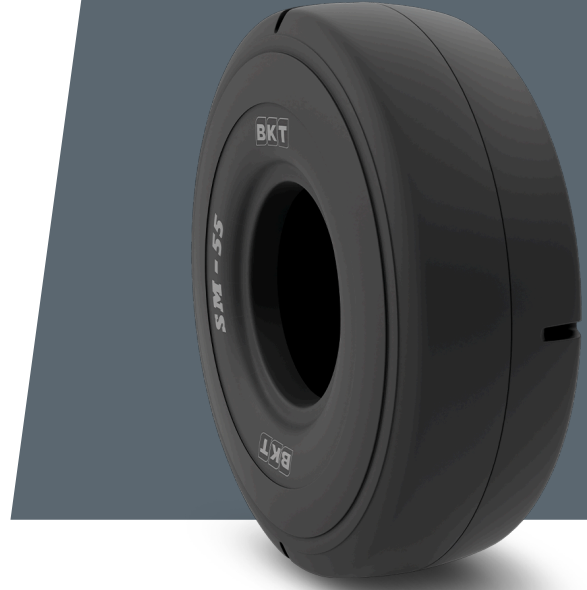


# SM 54 IND-4S

**16.00 - 25****UM** US STANDARD**CONSTRUCTION**  BIAS**MACHINERY** KONTEYNER YÜKLEYİCİ**VERSION** INDUSTRIAL**TIRE TYPE** TL

## UNDEFINED US STANDARD

**USA CODE** 94015610**RIM REC** 11.25/2.0**OD (IN)** 57.9**RIM ALT** 13.00/2.0**SLR (IN)** 26.6**PR** 28**RC (IN)** 171.4**TRA CODE** L4S

## LOAD CAPACITY (LBS/TIRE)

MPH / PSI	131
5	34200

Rolling Circumference & SLR values are at rated Load and inflation pressure. These values may vary at different Load and pressure condition.