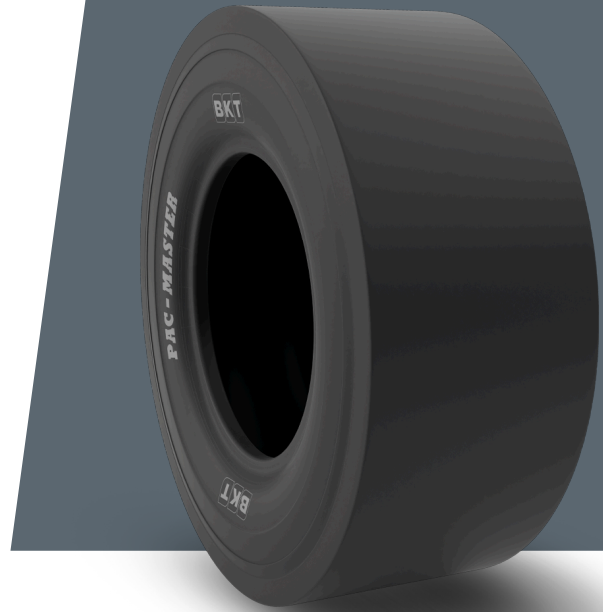


PAC MASTER

190/60 - 15

UM	IS STANDARD
CONSTRUCTION	❖ BIAS
MACHINERY	KOMPAKTÖR
VERSION	STANDARD
TIRE TYPE	TL



UNDEFINED IS STANDARD

SW (MM)	186	RIM REC	6.0
OD (MM)	610	ECE	E11-106R-005272
SLR (MM)	291	PR	6
RC (MM)	1853		

LOAD CAPACITY (KG/TIRE)

KM/H / BAR	2.80
10	750
15	600

Rolling Circumference & SLR values are at rated Load and inflation pressure. These values may vary at different Load and pressure condition.