

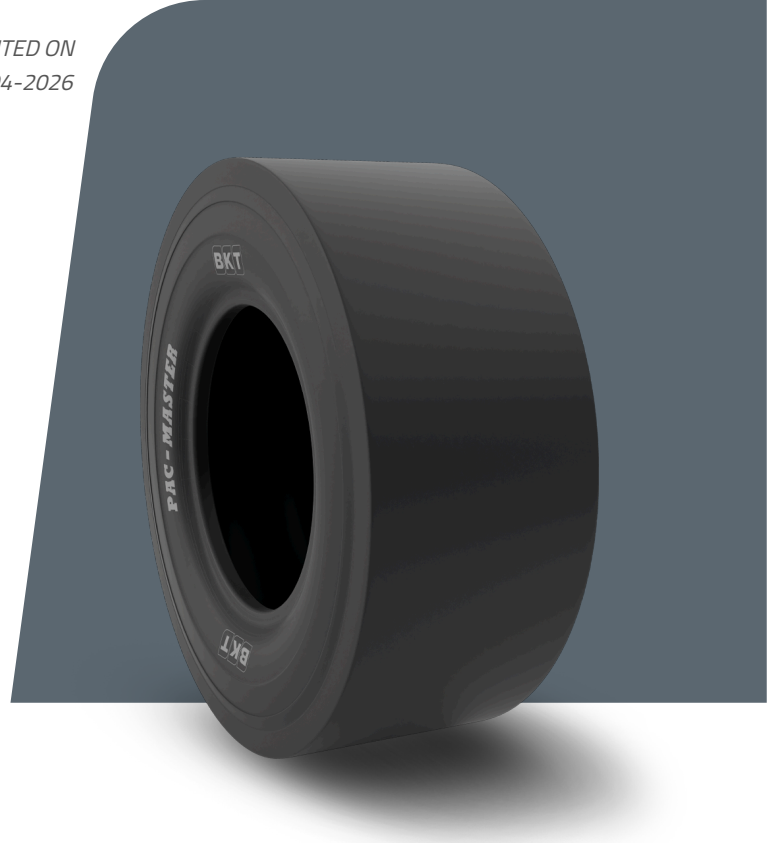


PRINTED ON
23-04-2026

DATA SHEET

PAC MASTER

TIRE SIZE	7.50 - 15
UM	US STANDARD
CONSTRUCTION	BIAS
MACHINERY	KOMPAKTFORDON
VERSION	STANDARD
TIRE TYPE	TT



DIMENSIONER US STANDARD

USA CODE	94002566	RIM ALT	6.5
SW (IN)	8.9	ECE	E11-106R-003393
OD (IN)	31.1	PR	12
RIM REC	6.0		

LOAD CAPACITY (LBS/TIRE)

MPH / PSI	109
5	5840
10	4670

Rolling Circumference & SLR values are at rated Load and inflation pressure. These values may vary at different Load and pressure condition.