

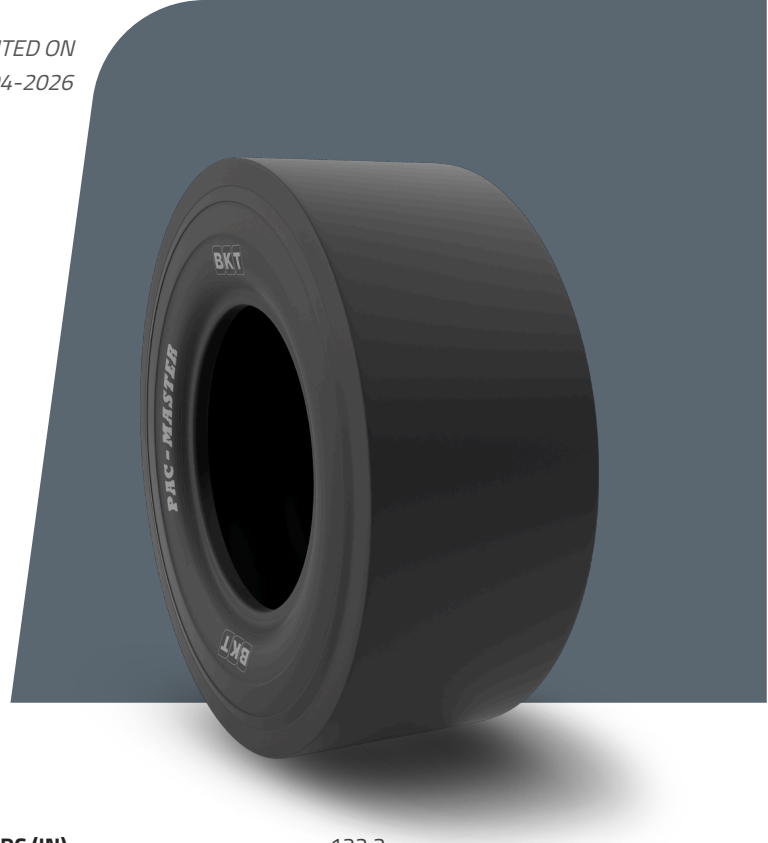


PRINTED ON
22-04-2026

DATA SHEET

PAC MASTER

TIRE SIZE	9.00 - 20
UM	US STANDARD
CONSTRUCTION	
MACHINERY	COMPACTOR
VERSION	STANDARD
TIRE TYPE	TT



DIMENSIONS US STANDARD

USA CODE	94002665	RC (IN)	122.3
SW (IN)	10.8	RIM REC	7.0
OD (IN)	40.0	RIM ALT	7.5
SLR (IN)	18.5	ECE	E11-106R-005360

LOAD CAPACITY (LBS/TIRE)

MPH / PSI	120
5	10500
10	8270

Rolling Circumference & SLR values are at rated Load and inflation pressure. These values may vary at different Load and pressure condition.