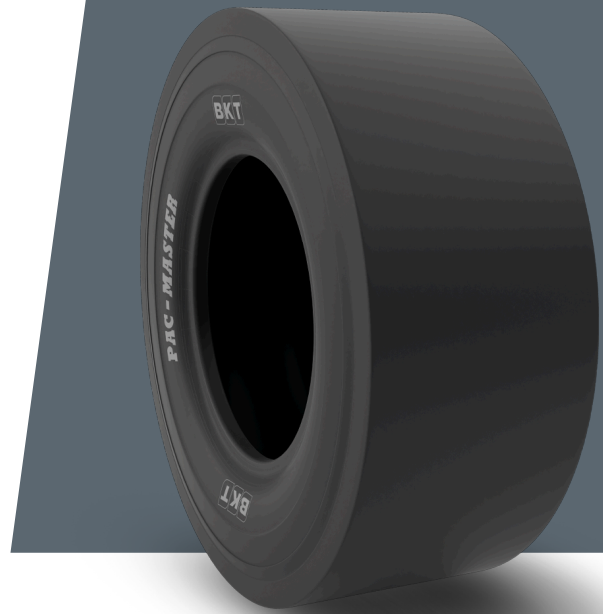


PAC MASTER

9.00 - 20

UM	US STANDARD
CONSTRUCTION	BIAS
MACHINERY	KOMPAKTÖR
VERSION	STANDARD
TIRE TYPE	TT



UNDEFINED US STANDARD

USA CODE	94002641	RC (IN)	122.3
SW (IN)	10.8	RIM REC	7.0
OD (IN)	40.0	RIM ALT	7.5
SLR (IN)	18.5	ECE	E11-106R-005359

LOAD CAPACITY (LBS/TIRE)

MPH / PSI	105
5	9650
10	7610

Rolling Circumference & SLR values are at rated Load and inflation pressure. These values may vary at different Load and pressure condition.