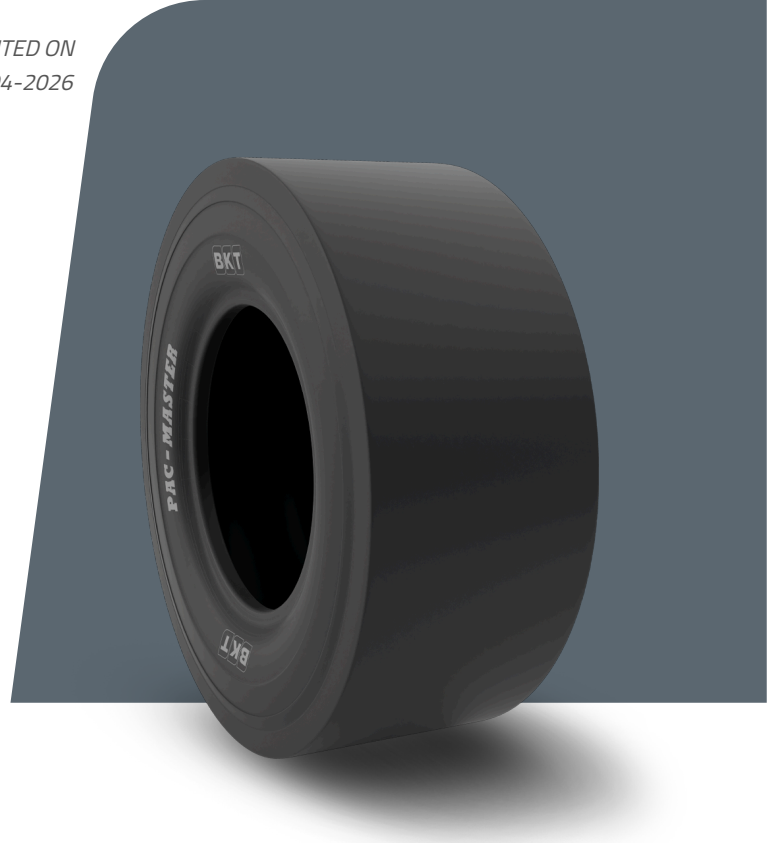


# PAC MASTER

|                     |             |
|---------------------|-------------|
| <b>TIRE SIZE</b>    | 205/60 - 15 |
| <b>UM</b>           | IS STANDARD |
| <b>CONSTRUCTION</b> | ❖ BIAS      |
| <b>MACHINERY</b>    | COMPACTADOR |
| <b>VERSÃO</b>       | STANDARD    |
| <b>TIRE TYPE</b>    | TL          |



## DIMENSÕES IS STANDARD

|                |       |           |   |
|----------------|-------|-----------|---|
| <b>SW (MM)</b> | 200   | <b>PR</b> | 6 |
| <b>OD (MM)</b> | 640   |           |   |
| <b>RIM REC</b> | 6.0 J |           |   |
| <b>RIM ALT</b> | 7.0 J |           |   |

## LOAD CAPACITY (KG/TIRE)

| <b>KM/H / BAR</b> | <b>3.25</b> |
|-------------------|-------------|
| 10                | 1060        |
| 15                | 850         |

Rolling Circumference & SLR values are at rated Load and inflation pressure. These values may vary at different Load and pressure condition.