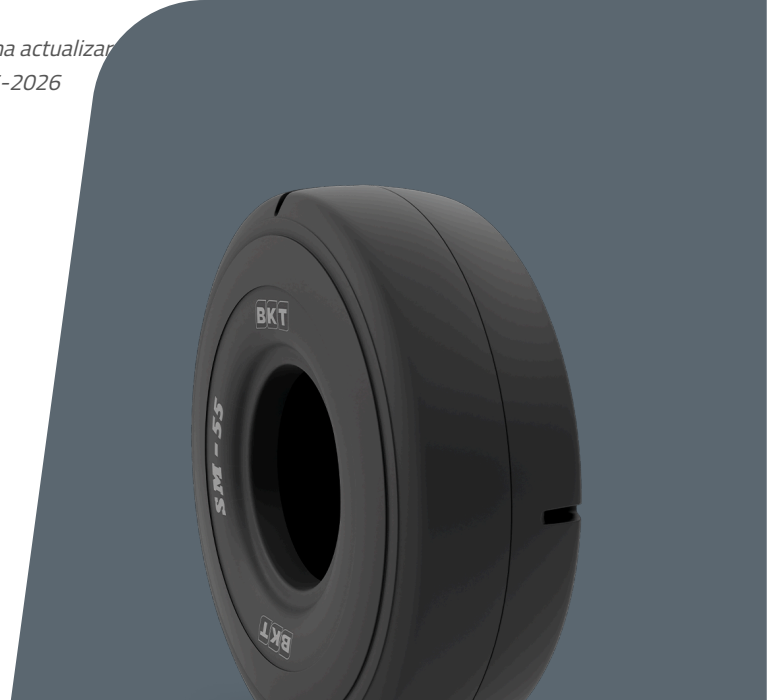


SM 54 IND-4S

TIRE SIZE	16.00 - 25
UM	US STANDARD
CONSTRUCTION	⊠ BIAS
MACHINERY	STIVUITOR DE CONTAINERE
VERSION	INDUSTRIAL
TIRE TYPE	TL



DIMENSIUNI US STANDARD

USA CODE	94015627	RIM REC	11.25/2.0
OD (IN)	57.9	RIM ALT	13.00/2.0
SLR (IN)	26.6	PR	32
RC (IN)	171.4	TRA CODE	L4S

LOAD CAPACITY (LBS/TIRE)

MPH / PSI	145
5	37200

Rolling Circumference & SLR values are at rated Load and inflation pressure. These values may vary at different Load and pressure condition.