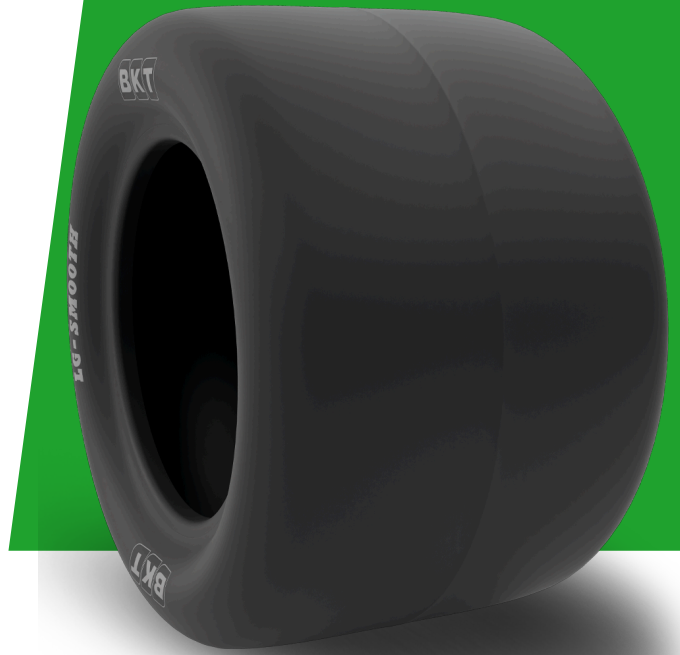


# LG SMOOTH

<b>TIRE SIZE</b>	<b>20X10.00 - 10</b>
<b>UM</b>	IS STANDARD
<b>CONSTRUCTION</b>	BIAS
<b>MACHINERY</b>	MAQUINA DE CORTAR RELVA / TRATOR PEQUENO / TRATOR
<b>VERSÃO</b>	STANDARD
<b>TIRE TYPE</b>	TL



## DIMENSÕES IS STANDARD

<b>SW (MM)</b>	245	<b>RIM REC</b>	8.00 I - 55
<b>OD (MM)</b>	500	<b>RIM ALT</b>	7.00 I - 55; I - 70; I - 90
<b>SLR (MM)</b>	223	<b>ECE</b>	E11-106R-003470
<b>RC (MM)</b>	1450	<b>PR</b>	4

## LOAD CAPACITY (KG/TIRE)

<b>KM/H / BAR</b>	<b>1.50</b>
15	530

Rolling Circumference & SLR values are at rated Load and inflation pressure. These values may vary at different Load and pressure condition.