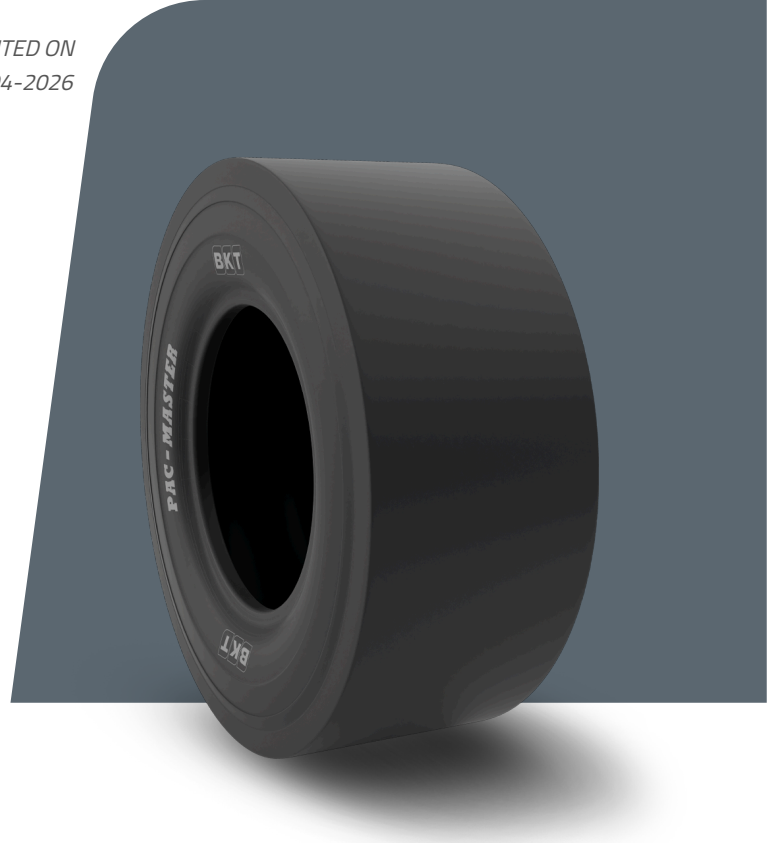


PAC MASTER

TIRE SIZE	8.5/90 - 15
UM	IS STANDARD
CONSTRUCTION	❖ BIAS
MACHINERY	COMPACTOR
VERSION	STANDARD
TIRE TYPE	TL



DIMENSIONS IS STANDARD

SW (MM)	230	ECE	E11-106R-003530
OD (MM)	785	PR	6
RIM REC	6.0		
RIM ALT	5.50 F		

LOAD CAPACITY (KG/TIRE)

KM/H / BAR	3.50
10	1800
15	1450

Rolling Circumference & SLR values are at rated Load and inflation pressure. These values may vary at different Load and pressure condition.