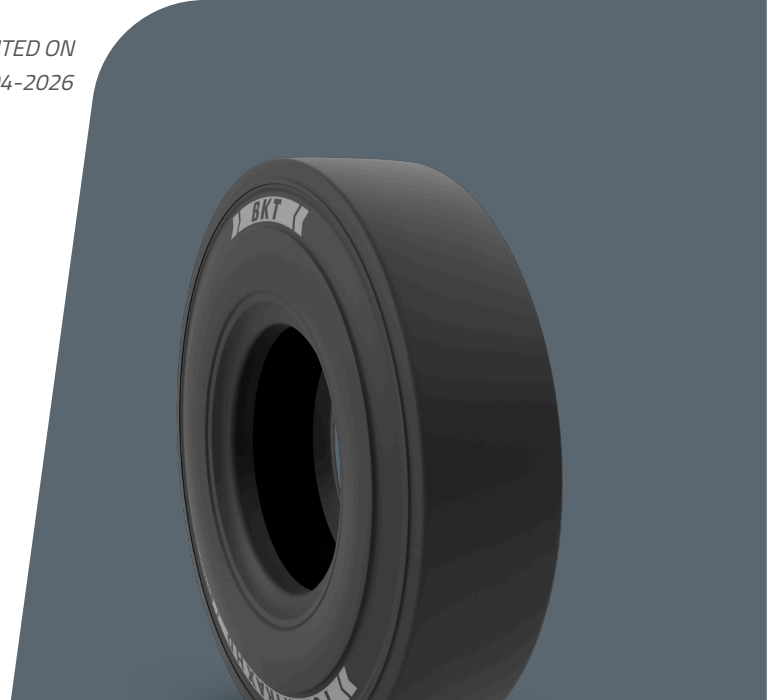


POWER TRAX HD SMOOTH

TIRE SIZE	6.00 - 20
UM	IS STANDARD
CONSTRUCTION	BIAS
MACHINERY	MANIPULATOR DE CONTAINERE / STIVUITOR
VERSION	STANDARD
TIRE TYPE	TT



DIMENSIUNI IS STANDARD

SW (MM)	320	PR	28
OD (MM)	1150		
RIM REC	8.50		
RIM ALT	9.0		

LOAD CAPACITY (KG/TIRE)

KM/H / BAR	10.00
25 LOAD WHEEL	9490
25 STEER WHEEL	7300
10 OTHER VEHICLES	9490
25 OTHER VEHICLES	7300
STATIC SIDE LOADER	11025

Rolling Circumference & SLR values are at rated Load and inflation pressure. These values may vary at different Load and pressure condition.