
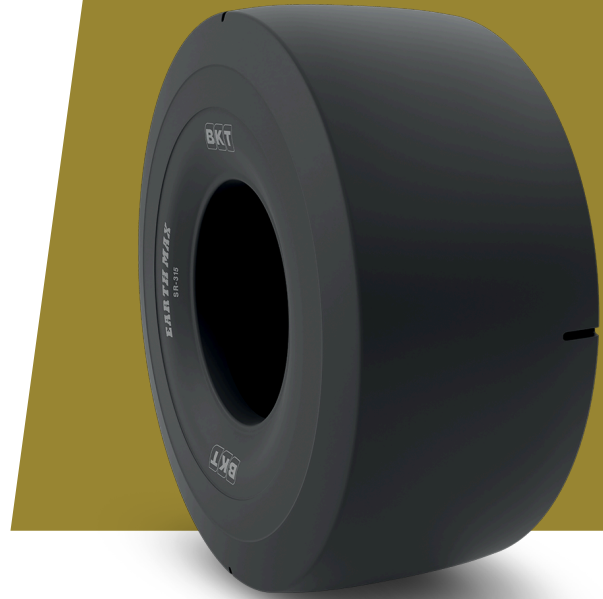


EARTHMAX SR 315

TIRE SIZE	26.5 R 29
UM	US STANDARD
CONSTRUCTION	 RADIAL
MACHINERY	CHARGEUR-TRANSPORTEUR LHD
VERSION	CUT RESISTANT COMPOUND
TIRE TYPE	TL
LI/SS	211 A2



DIMENSIONS US STANDARD

CODE USA	94067411	RIM REC	22.00/3.0
OD (IN)	73.4	TRA CODE	L3S
SLR (IN)	32.7	STAR RATING	★★
RC (IN)	221.9		

LOAD CAPACITY (LBS/TIRE)

MPH / PSI	76	80	83	87	91	94
5	36400	38600	39700	40800	41900	43000

Rolling Circumference & SLR values are at rated Load and inflation pressure. These values may vary at different Load and pressure condition.