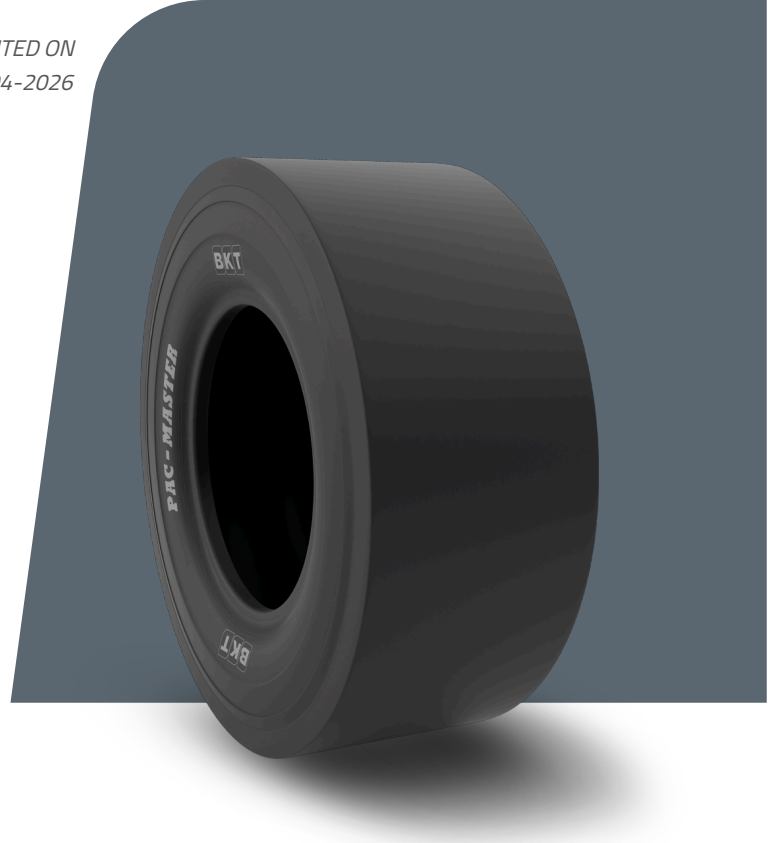


# PAC MASTER

**8.5/90 - 15**

<b>UM</b>	US STANDARD
<b>CONSTRUCTION</b>	❖ BIAS
<b>MACHINERY</b>	KOMPAKTÖR
<b>VERSION</b>	STANDARD
<b>TIRE TYPE</b>	TL



## UNDEFINED US STANDARD

<b>USA CODE</b>	94002603	<b>RIM ALT</b>	5.50 F
<b>SW (IN)</b>	9.1	<b>ECE</b>	E11-106R-003530
<b>OD (IN)</b>	30.9	<b>PR</b>	6
<b>RIM REC</b>	6.0		

## LOAD CAPACITY (LBS/TIRE)

<b>MPH / PSI</b>	<b>51</b>
5	3960
10	3200

Rolling Circumference & SLR values are at rated Load and inflation pressure. These values may vary at different Load and pressure condition.