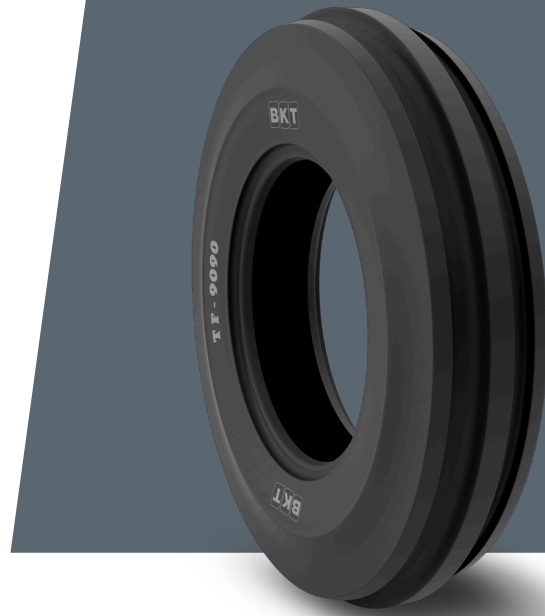


TF 9090 IND

| | |
|---------------------|-------------|
| TIRE SIZE | 7.50 - 20 |
| UM | IS STANDARD |
| CONSTRUCTION | |
| MACHINERY | TRAILER |
| VERSION | INDUSTRIAL |
| TIRE TYPE | TT |
| LI/SS | 109 A6 |



DIMENSIONS IS STANDARD

| | | | |
|-----------------|------|-----------------|--------|
| SW (MM) | 205 | RIM REC | 5.50 F |
| OD (MM) | 915 | RIM ALT | 5.00 F |
| SLR (MM) | 431 | PR | 8 |
| RC (MM) | 2725 | TRA CODE | F2 |

LOAD CAPACITY (KG/TIRE)

| | |
|-------------------|-------------|
| KM/H / BAR | 3.40 |
| 30 | 1030 |

Rolling Circumference & SLR values are at rated Load and inflation pressure. These values may vary at different Load and pressure condition.