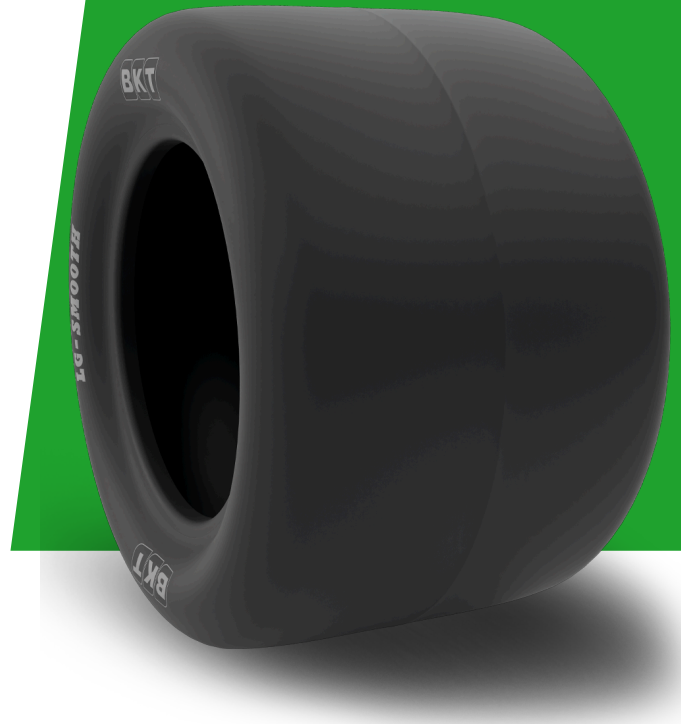


LG SMOOTH

TIRE SIZE	20X10.00 - 10
UM	US STANDARD
CONSTRUCTION	BIAS
MACHINERY	ÅKGRÄSKLIPPARE / LITEN TRAKTOR / TRAKTOR
VERSION	STANDARD
TIRE TYPE	TL



DIMENSIONER US STANDARD

USA CODE	94025664	RC (IN)	57.1
SW (IN)	9.6	RIM REC	8.00 - 55
OD (IN)	19.7	RIM ALT	7.00 - 55; - 70; - 90
SLR (IN)	8.8	ECE	E11-106R-005201

LOAD CAPACITY (LBS/TIRE)

MPH / PSI	10
10	740

Rolling Circumference & SLR values are at rated Load and inflation pressure. These values may vary at different Load and pressure condition.