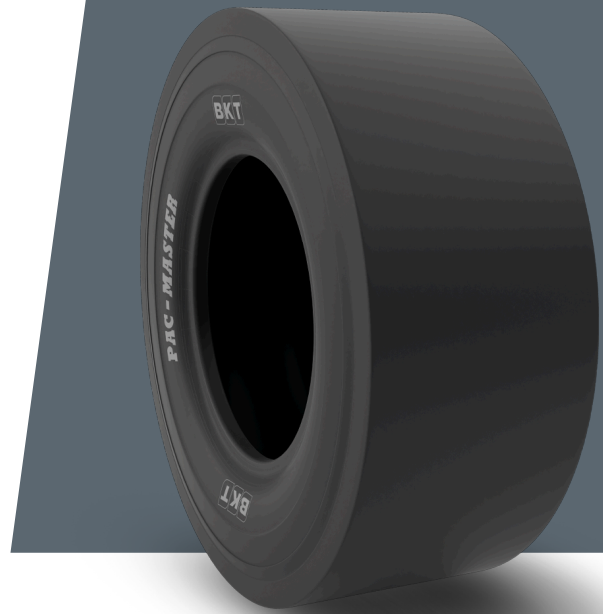


PAC MASTER

9.00 - 20

UM	IS STANDARD
CONSTRUCTION	BIAS
MACHINERY	KOMPAKTÖR
VERSION	STANDARD
TIRE TYPE	TT



UNDEFINED IS STANDARD

SW (MM)	275	RIM REC	7.0
OD (MM)	1016	RIM ALT	7.5
SLR (MM)	471	ECE	E11-106R-005359
RC (MM)	3107	PR	14

LOAD CAPACITY (KG/TIRE)

KM/H / BAR	7.25
10	4375
15	3450

Rolling Circumference & SLR values are at rated Load and inflation pressure. These values may vary at different Load and pressure condition.