
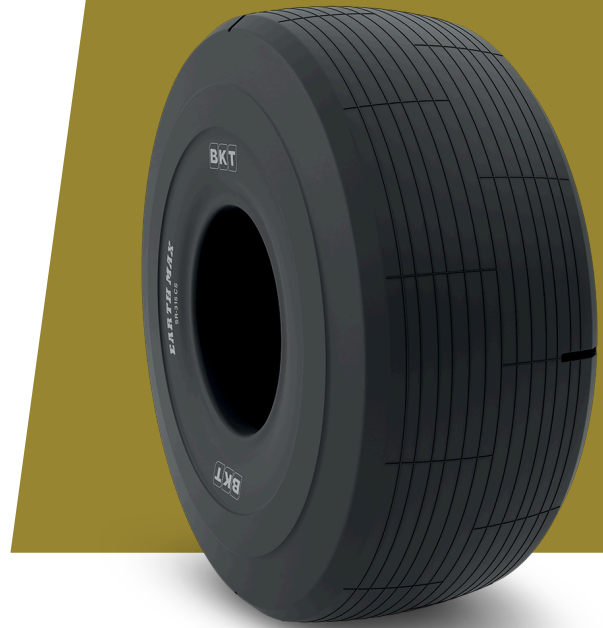


# EARTHMAX SR 315 CS

<b>TIRE SIZE</b>	<b>35/65 R 33</b>
<b>UM</b>	IS STANDARD
<b>CONSTRUCTION</b>	 RADIAL
<b>MACHINERY</b>	CARREGADORA LHD / CARREGADORA
<b>VERSÃO</b>	CUT RESISTANT COMPOUND
<b>TIRE TYPE</b>	TL
<b>LI/SS</b>	229 A2



## DIMENSÕES IS STANDARD

<b>OD (MM)</b>	1948	<b>TRA CODE</b>	L3S
<b>SLR (MM)</b>	867	<b>STAR RATING</b>	★★★
<b>RC (MM)</b>	5886		
<b>RIM REC</b>	28.00/3.5		

## LOAD CAPACITY (KG/TIRE)

KM/H / BAR	6.75	7.00	7.25	7.50	7.75	8.00
10	29000	30000	30750	31500	32000	32500

Rolling Circumference & SLR values are at rated Load and inflation pressure. These values may vary at different Load and pressure condition.