
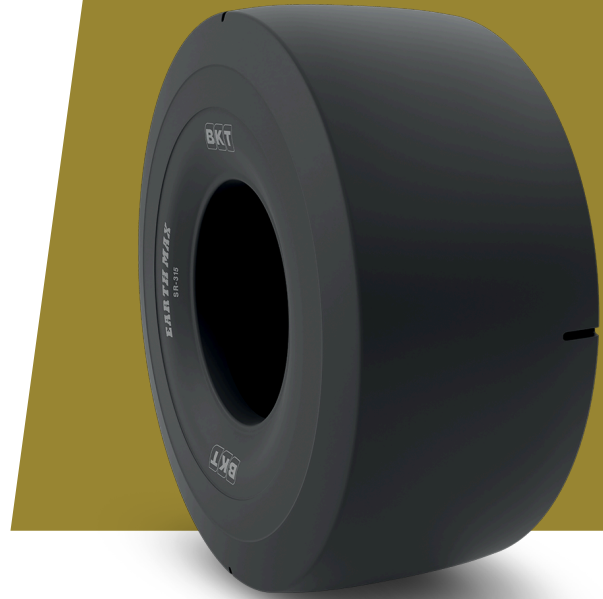


EARTHMAX SR 315

TIRE SIZE	15.5 R 25
UM	US STANDARD
CONSTRUCTION	 RADIAL
MACHINERY	CARGADORA LHD
VERSIÓN	CUT RESISTANT COMPOUND
TIRE TYPE	TL
LI/SS	182 A2



DIMENSIONES US STANDARD

CÓDIGO USA	94515257	RIM REC	12.00/1.3
OD (IN)	49.8	TRA CODE	L3S
SLR (IN)	22.3	STAR RATING	★★★
RC (IN)	150.5		

LOAD CAPACITY (LBS/TIRE)

MPH / PSI	116
5	18700

Rolling Circumference & SLR values are at rated Load and inflation pressure. These values may vary at different Load and pressure condition.