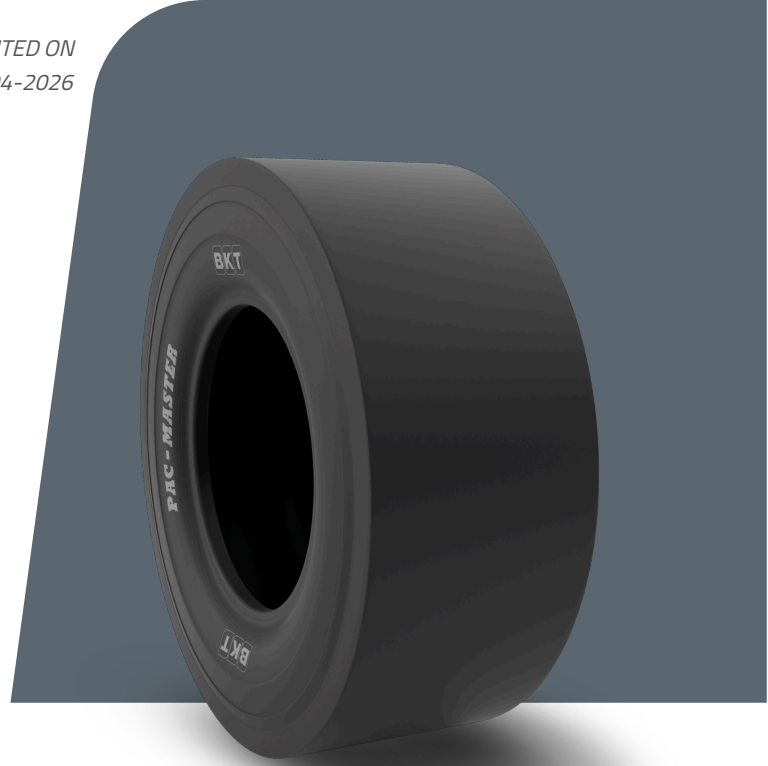


PAC MASTER

TIRE SIZE	11.00 - 20
UM	US STANDARD
CONSTRUCTION	BIAS
MACHINERY	COMPACTADOR
VERSIÓN	SPECIAL
TIRE TYPE	TT



DIMENSIONES US STANDARD

CÓDIGO USA	94067152	RC (IN)	130.3
SW (IN)	11.5	RIM REC	8.0
OD (IN)	42.1	RIM ALT	8.5
SLR (IN)	19.4	ECE	E11-106R-003407

LOAD CAPACITY (LBS/TIRE)

MPH / PSI	105
5	12000
10	9640

Rolling Circumference & SLR values are at rated Load and inflation pressure. These values may vary at different Load and pressure condition.