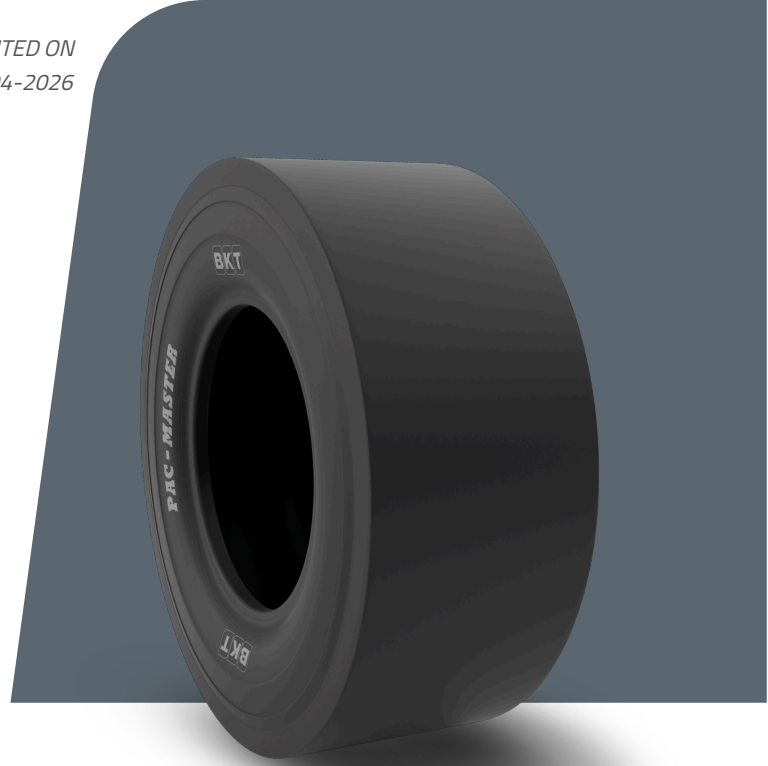


# PAC MASTER

|                     |                  |
|---------------------|------------------|
| <b>TIRE SIZE</b>    | <b>9.00 - 20</b> |
| <b>UM</b>           | US STANDARD      |
| <b>CONSTRUCTION</b> | BIAS             |
| <b>MACHINERY</b>    | COMPACTADOR      |
| <b>VERSIÓN</b>      | STANDARD         |
| <b>TIRE TYPE</b>    | TT               |



## DIMENSIONES US STANDARD

|                   |          |                |                 |
|-------------------|----------|----------------|-----------------|
| <b>CÓDIGO USA</b> | 94002627 | <b>RC (IN)</b> | 122.3           |
| <b>SW (IN)</b>    | 10.8     | <b>RIM REC</b> | 7.0             |
| <b>OD (IN)</b>    | 40.0     | <b>RIM ALT</b> | 7.5             |
| <b>SLR (IN)</b>   | 18.5     | <b>ECE</b>     | E11-106R-005358 |

## LOAD CAPACITY (LBS/TIRE)

| <b>MPH / PSI</b> | <b>91</b> |
|------------------|-----------|
| 5                | 8800      |
| 10               | 6940      |

Rolling Circumference & SLR values are at rated Load and inflation pressure. These values may vary at different Load and pressure condition.