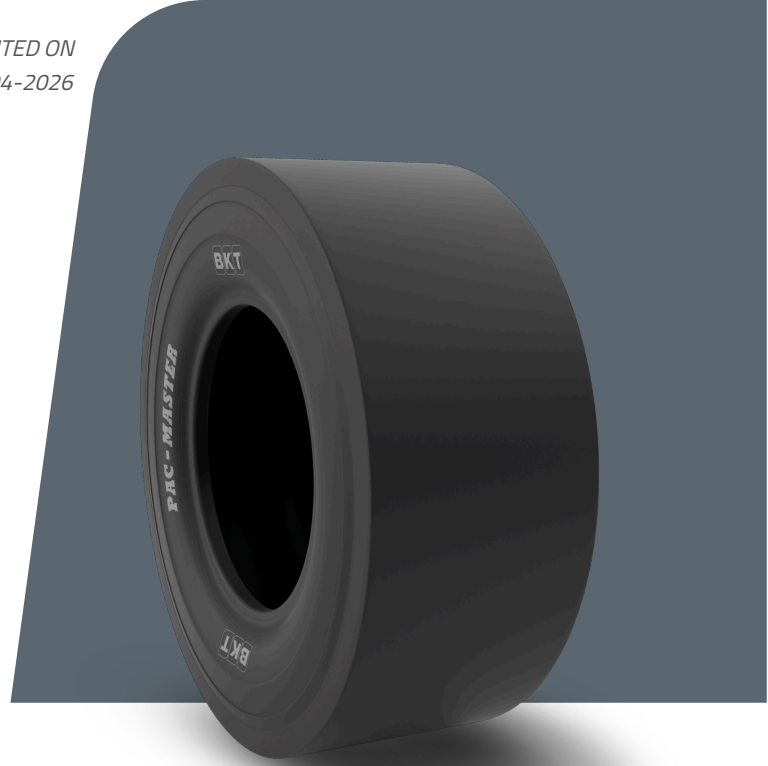


# PAC MASTER

<b>TIRE SIZE</b>	11.00 - 20
<b>UM</b>	US STANDARD
<b>CONSTRUCTION</b>	BIAS
<b>MACHINERY</b>	KOMPAKTFORDON
<b>VERSION</b>	SPECIAL
<b>TIRE TYPE</b>	TT



## DIMENSIONER US STANDARD

<b>USA CODE</b>	94067152	<b>RC (IN)</b>	130.3
<b>SW (IN)</b>	11.5	<b>RIM REC</b>	8.0
<b>OD (IN)</b>	42.1	<b>RIM ALT</b>	8.5
<b>SLR (IN)</b>	19.4	<b>ECE</b>	E11-106R-003407

## LOAD CAPACITY (LBS/TIRE)

MPH / PSI	105
5	12000
10	9640

Rolling Circumference & SLR values are at rated Load and inflation pressure. These values may vary at different Load and pressure condition.