
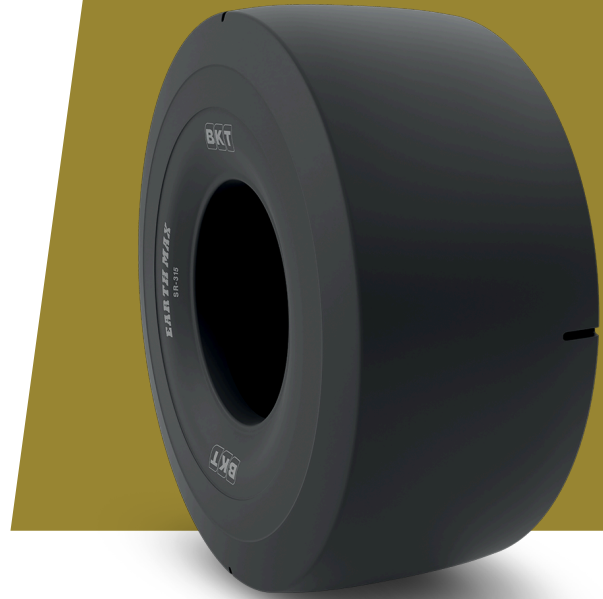


EARTHMAX SR 315

TIRE SIZE	15.5 R 25
UM	IS STANDARD
CONSTRUCTION	 RADIAL
MACHINERY	CARREGADORA LHD
VERSÃO	CUT RESISTANT COMPOUND
TIRE TYPE	TL
LI/SS	182 A2



DIMENSÕES IS STANDARD

OD (MM)	1265	TRA CODE	L3S
SLR (MM)	566	STAR RATING	★★★
RC (MM)	3822		
RIM REC	12.00/1.3		

LOAD CAPACITY (KG/TIRE)

KM/H / BAR	8.00
10	8500

Rolling Circumference & SLR values are at rated Load and inflation pressure. These values may vary at different Load and pressure condition.