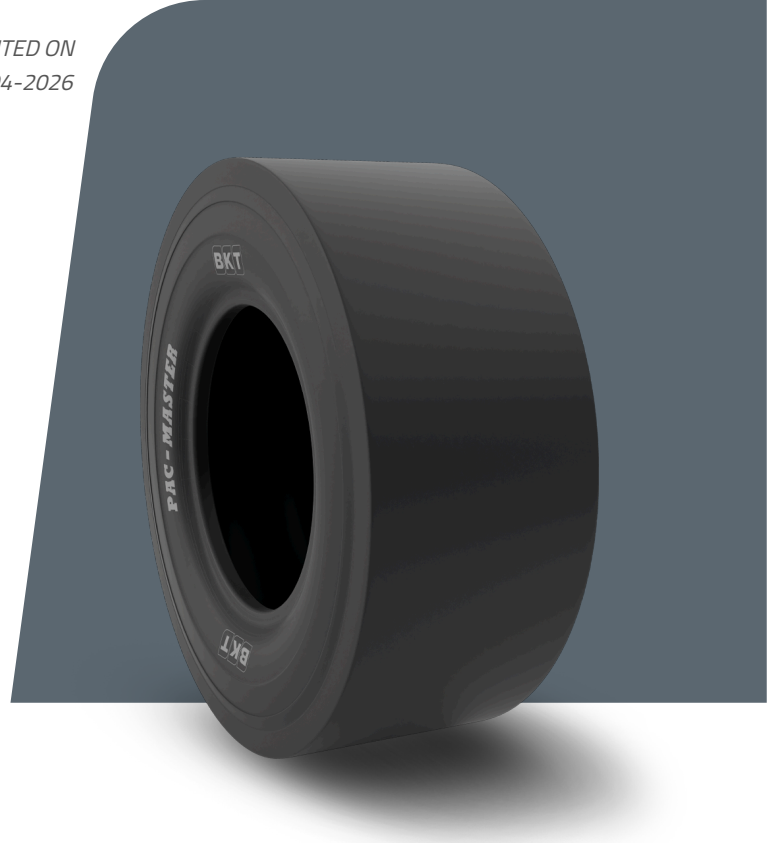


# PAC MASTER

<b>TIRE SIZE</b>	205/60 - 15
<b>UM</b>	IS STANDARD
<b>CONSTRUCTION</b>	❖ BIAS
<b>MACHINERY</b>	УПЛОТНИТЕЛЬНАЯ ТЕХНИКА
<b>VERSION</b>	STANDARD
<b>TIRE TYPE</b>	TL



## РАЗМЕРЫ IS STANDARD

<b>SW (MM)</b>	200	<b>PR</b>	6
<b>OD (MM)</b>	640		
<b>RIM REC</b>	6.0 J		
<b>RIM ALT</b>	7.0 J		

## LOAD CAPACITY (KG/TIRE)

<b>KM/H / BAR</b>	<b>3.25</b>
10	1060
15	850

Rolling Circumference & SLR values are at rated Load and inflation pressure. These values may vary at different Load and pressure condition.