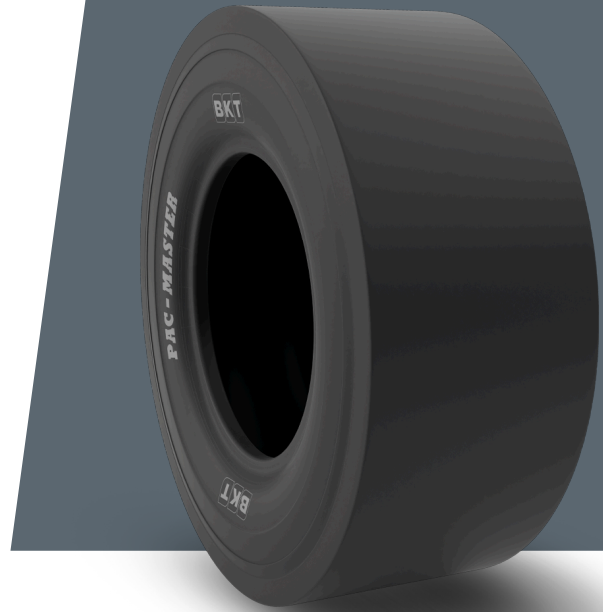


PAC MASTER

9.5/65 - 15

UM	US STANDARD
CONSTRUCTION	BIAS
MACHINERY	KOMPAKTÖR
VERSION	STANDARD
TIRE TYPE	TL



UNDEFINED US STANDARD

USA CODE	94038275	ECE	E11-106R-005303
SW (IN)	9.3	PR	6
OD (IN)	26.6		
RIM REC	7.0		

LOAD CAPACITY (LBS/TIRE)

MPH / PSI	47
5	2910
10	2340

Rolling Circumference & SLR values are at rated Load and inflation pressure. These values may vary at different Load and pressure condition.