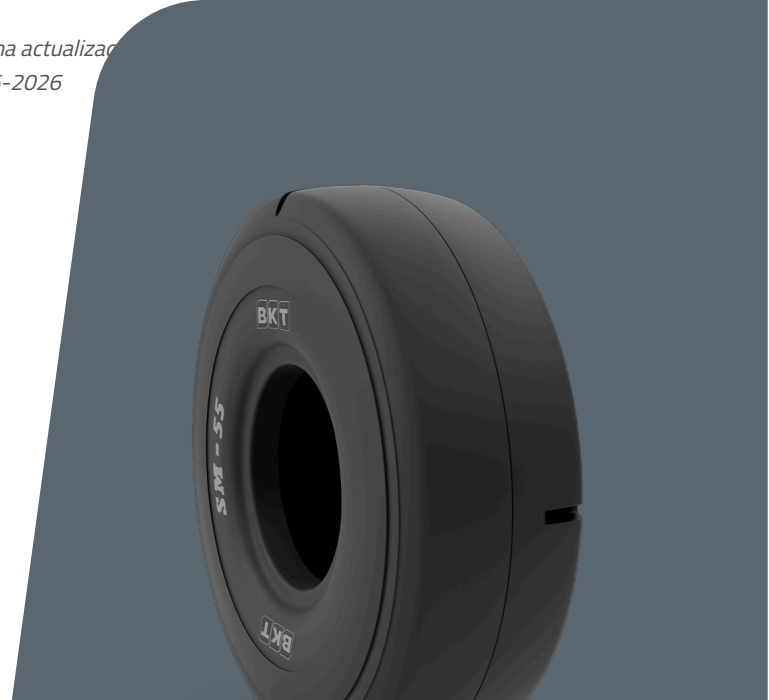


# SM 54 IND-4S

<b>TIRE SIZE</b>	16.00 - 25
<b>UM</b>	IS STANDARD
<b>CONSTRUCTION</b>	BIAS
<b>MACHINERY</b>	GRÚA REACH STACKER
<b>VERSIÓN</b>	INDUSTRIAL
<b>TIRE TYPE</b>	TL



## DIMENSIONES IS STANDARD

<b>OD (MM)</b>	1470	<b>RIM ALT</b>	13.00/2.0
<b>SLR (MM)</b>	676	<b>PR</b>	32
<b>RC (MM)</b>	4354	<b>TRA CODE</b>	L4S
<b>RIM REC</b>	11.25/2.0		

## LOAD CAPACITY (KG/TIRE)

<b>KM/H / BAR</b>	<b>10.00</b>
10	16875

Rolling Circumference & SLR values are at rated Load and inflation pressure. These values may vary at different Load and pressure condition.