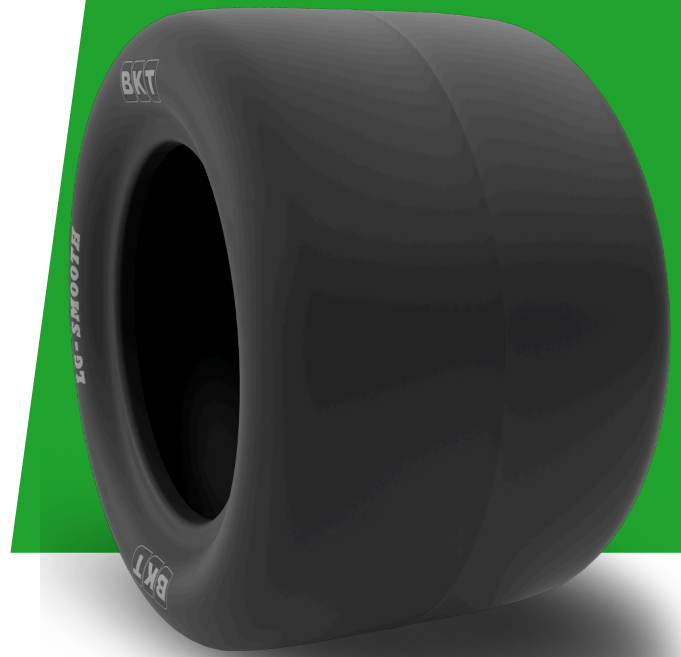


# LG SMOOTH

<b>TIRE SIZE</b>	<b>18X10.50 - 10</b>
<b>UM</b>	IS STANDARD
<b>CONSTRUCTION</b>	BIAS
<b>MACHINERY</b>	FAUCHEUSE / MICRO TRACTEUR / TRACTEUR
<b>VERSION</b>	STANDARD
<b>TIRE TYPE</b>	TL



## DIMENSIONS IS STANDARD

<b>SW (MM)</b>	254	<b>RIM REC</b>	8.5 I - 55; I - 70; I - 90
<b>OD (MM)</b>	460	<b>RIM ALT</b>	8½ JA
<b>SLR (MM)</b>	207	<b>ECE</b>	E11-106R-005203
<b>RC (MM)</b>	1334	<b>PR</b>	2

## LOAD CAPACITY (KG/TIRE)

<b>KM/H / BAR</b>	<b>0.80</b>
15	334

Rolling Circumference & SLR values are at rated Load and inflation pressure. These values may vary at different Load and pressure condition.