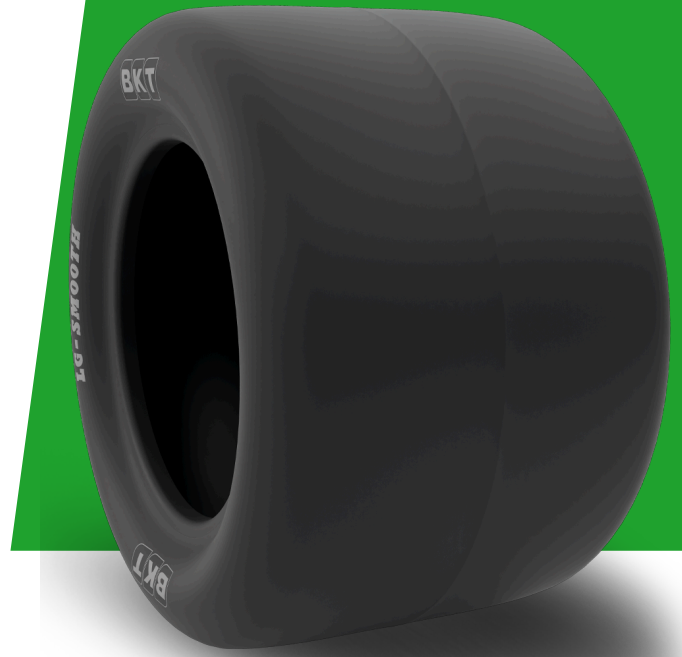


LG SMOOTH

TIRE SIZE	20X10.00 - 10
UM	IS STANDARD
CONSTRUCTION	BIAS
MACHINERY	MAQUINA DE CORTAR RELVA / TRATOR PEQUENO / TRATOR
VERSÃO	ARAMID BELTED
TIRE TYPE	TL



DIMENSÕES IS STANDARD

SW (MM)	245	RIM REC	8.00 I - 55
OD (MM)	500	RIM ALT	7.00 I - 55; I - 70; I - 90
SLR (MM)	223	ECE	E11-106R-005220
RC (MM)	1450	PR	6

LOAD CAPACITY (KG/TIRE)

KM/H / BAR	2.20
15	660

Rolling Circumference & SLR values are at rated Load and inflation pressure. These values may vary at different Load and pressure condition.