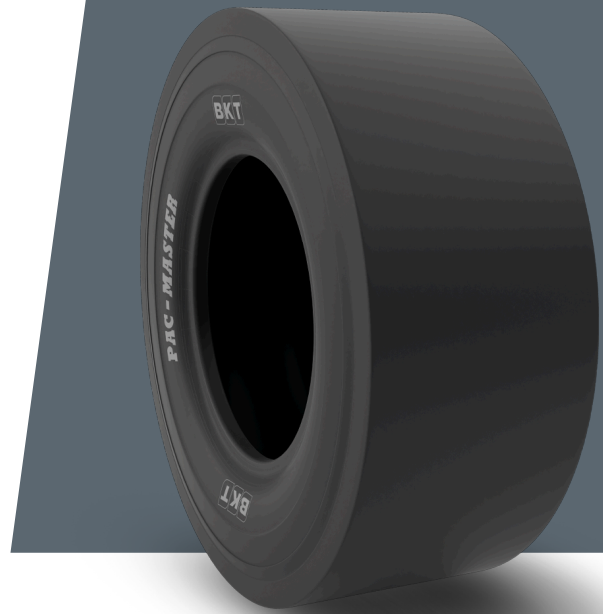


PAC MASTER

10.5/80 - 16

UM	US STANDARD
CONSTRUCTION	BIAS
MACHINERY	KOMPAKTÖR
VERSION	STANDARD
TIRE TYPE	TL



UNDEFINED US STANDARD

USA CODE	94053278	RC (IN)	97.6
SW (IN)	10.8	RIM REC	8.0
OD (IN)	31.9	ECE	E11-106R-004647
SLR (IN)	15.0	PR	14

LOAD CAPACITY (LBS/TIRE)

MPH / PSI	87
5	6120
10	4960

Rolling Circumference & SLR values are at rated Load and inflation pressure. These values may vary at different Load and pressure condition.