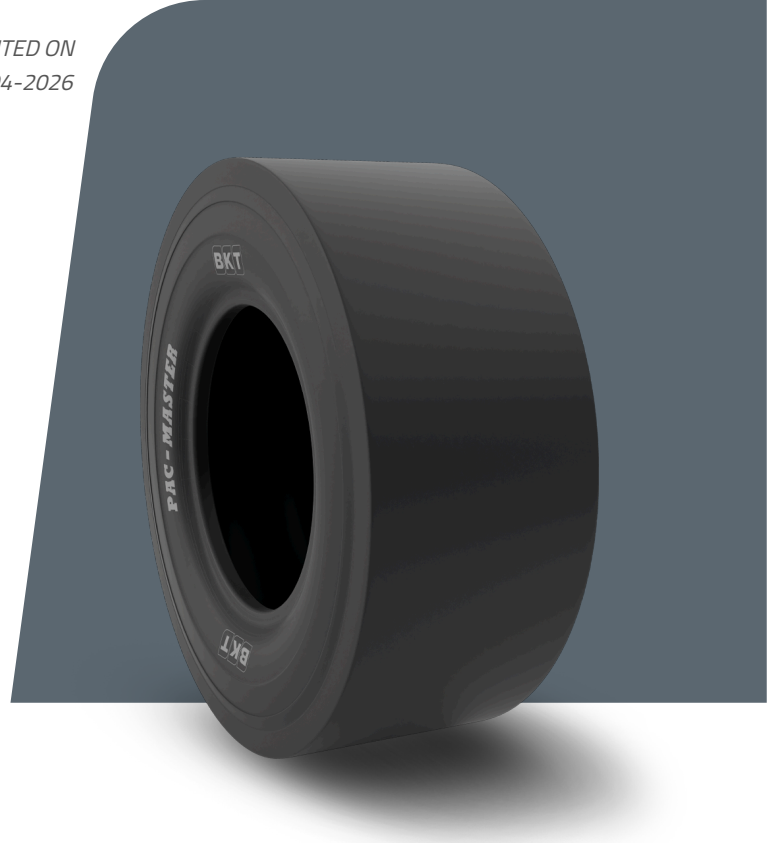


PAC MASTER

TIRE SIZE	7.50 - 16
UM	IS STANDARD
CONSTRUCTION	⊠ BIAS
MACHINERY	COMPACTOR
VERSION	STANDARD
TIRE TYPE	TT



DIMENSIONS IS STANDARD

SW (MM)	225	ECE	E11-106R-004648
OD (MM)	815	PR	14
RIM REC	6.0		
RIM ALT	6.5		

LOAD CAPACITY (KG/TIRE)

KM/H / BAR	8.75
10	2900
15	2300

Rolling Circumference & SLR values are at rated Load and inflation pressure. These values may vary at different Load and pressure condition.