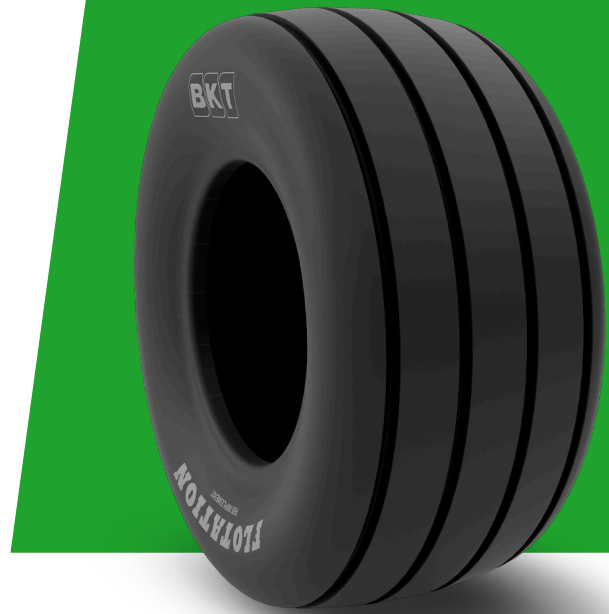


# FLOTATION RIB IMPLEMENT

<b>TIRE SIZE</b>	<b>31X13.50 - 15</b>
<b>UM</b>	US STANDARD
<b>CONSTRUCTION</b>	BIAS
<b>MACHINERY</b>	ENFARDADEIRA DE FENO / IMPLEMENTOS AGRÍCOLAS / REBOQUE / CEIFEIRA / IMPLEMENTOS AGRÍCOLAS
<b>VERSÃO</b>	STANDARD
<b>TIRE TYPE</b>	TL
<b>LI/SS</b>	124 B



## DIMENSÕES US STANDARD

<b>CÓDIGO USA</b>	94040469	<b>RC (IN)</b>	94.4
<b>SW (IN)</b>	14.2	<b>RIM REC</b>	10 LB
<b>OD (IN)</b>	30.7	<b>ECE</b>	E11-106R-003389
<b>SLR (IN)</b>	14.7	<b>PR</b>	12

## LOAD CAPACITY (LBS/TIRE)

<b>MPH / PSI</b>	<b>75</b>
30	3520

Rolling Circumference & SLR values are at rated Load and inflation pressure. These values may vary at different Load and pressure condition.