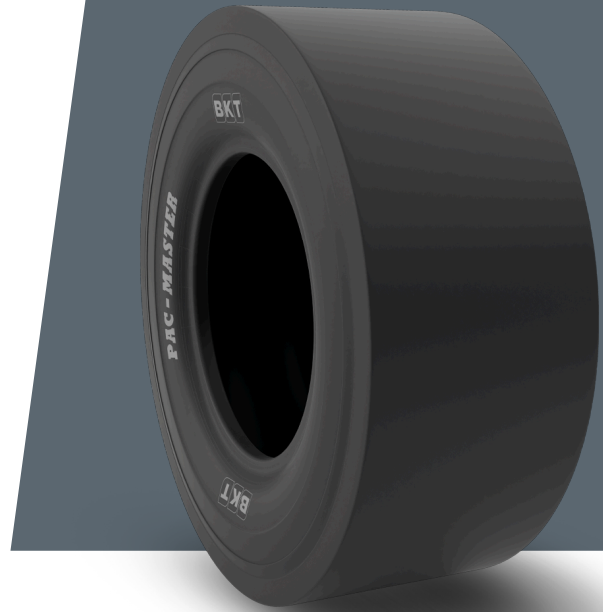


# PAC MASTER

**7.50 - 15**

<b>UM</b>	IS STANDARD
<b>CONSTRUCTION</b>	❖ BIAS
<b>MACHINERY</b>	KOMPAKTÖR
<b>VERSION</b>	STANDARD
<b>TIRE TYPE</b>	TT



## UNDEFINED IS STANDARD

<b>SW (MM)</b>	225	<b>ECE</b>	E11-106R-003393
<b>OD (MM)</b>	790	<b>PR</b>	12
<b>RIM REC</b>	6.0		
<b>RIM ALT</b>	6.5		

## LOAD CAPACITY (KG/TIRE)

<b>KM/H / BAR</b>	<b>7.50</b>
10	2650
15	2120

Rolling Circumference & SLR values are at rated Load and inflation pressure. These values may vary at different Load and pressure condition.