



BUILT TO LAST



ENDURANCE CHAMPION

Blackcat products are built for unmatched reliability, long life, and resilience. Made with superior components, they deliver consistent performance year after year in tough conditions.

OEMS TRUST BLACKCAT

Blackcat products undergo rigorous quality checks and advanced testing to ensure unmatched reliability and performance. That's why over 12 leading OEMs trust Blackcat.





PIONEER IN AUTOMOTIVE ELECTRONIC ACCESSORIES. SINCE 1993



Mr. Ratan Tata engaging with Blackcat team, 1996



Mr. Jagdish Khattar with Blackcat car security system, 1997





PROUD TO BE ASSOCIATED WITH 15+ OEM CUSTOMERS

PASSENGER VEHICLE OEMS



COMMERCIAL VEHICLE OEMS



BUS/ TEMPO BODY-BUILDER



LOGOS ARE THE PROPERTY OF THE RESPECTIVE TRADEMARK OWNERS.
THEY HAVE BEEN USED ONLY FOR REFERENCE.



30,000 SQFT 3 FACTORIES





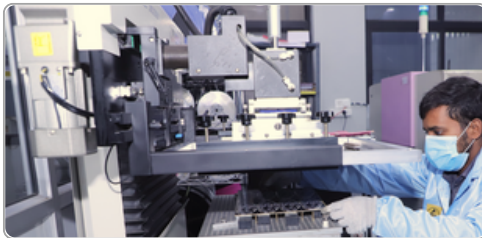
ADVANCED MACHINERY



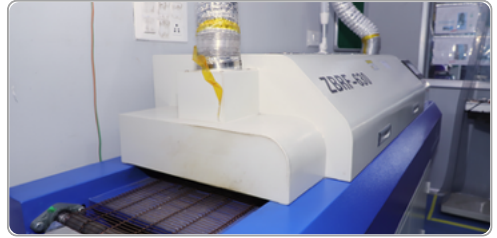
Dust-free, ESD Safe SMT Area



2x SMT Pick & Place Machines



Automatic Solder Paste Printing



7 Zone Reflow Oven



Semi-automatic Crimping



Automatic Wire Cutting & Stripping



STRINGENT TESTING



Automated PD-QC Testing (100% online)



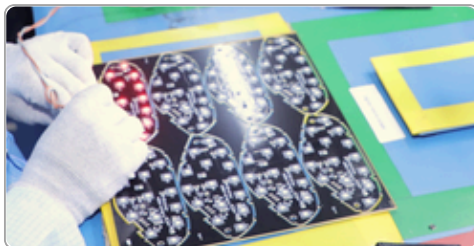
100% Automatic Cable Testing (online)



100% Ageing/ Burning Test (online)



2000x Microscope Inspection



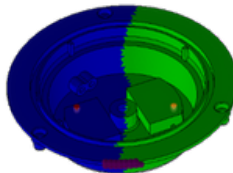
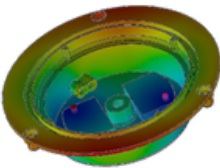
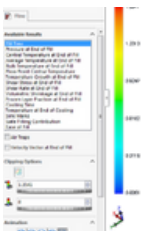
100% PCBA functional testing (online)



LED Electrical Load & Glow Test (100%)

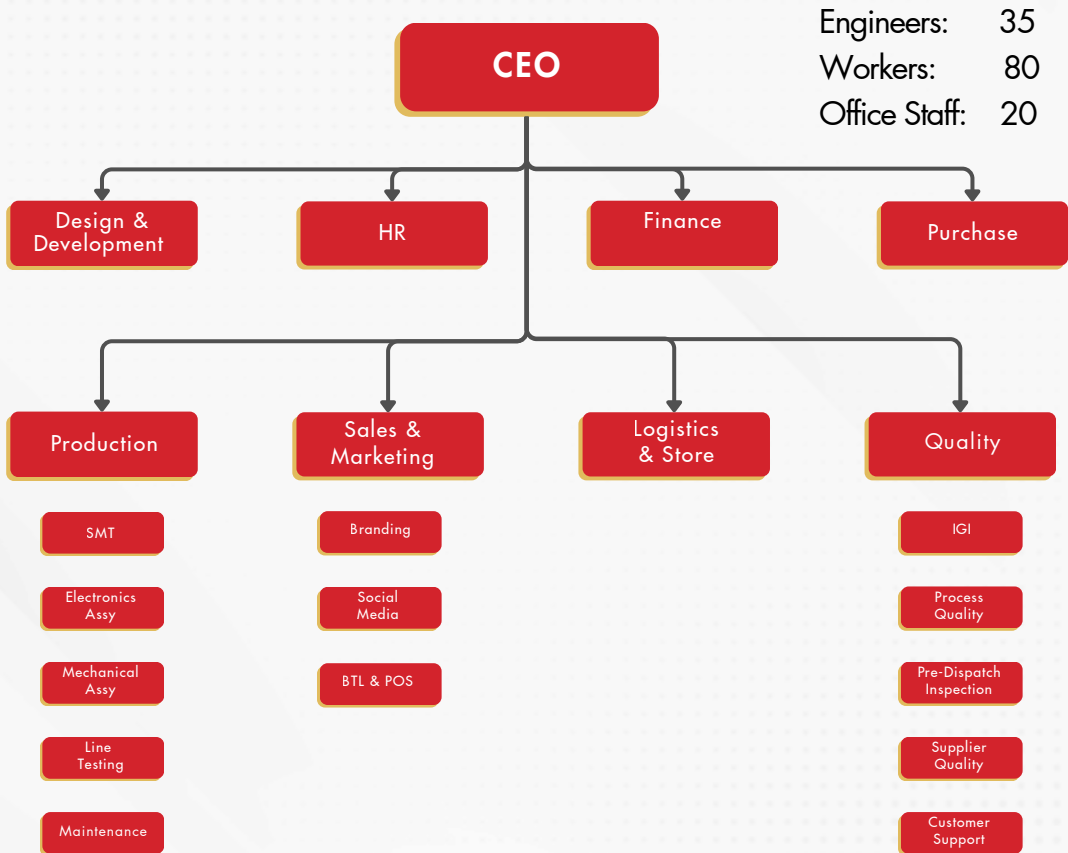
CUTTING EDGE PRODUCT DEVELOPMENT

- 3D CAD Designing
- Mechanical Stress Simulation
- Electronic Circuit and PCB Designing
- Rapid Prototyping
- DFM, DFA
- FMEA
- Embedded systems



QUALIFIED STAFF

PROFESSIONAL MGMT





STRINGENT QUALITY TESTING

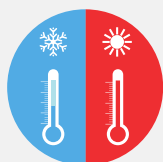


<ul style="list-style-type: none">✓ Production Facility✓ Financial Stability✓ Quality System Certification✓ Manpower✓ Testing Facility✓ Product Certification	<ul style="list-style-type: none">✓ Supplier audit✓ Joint problem solving✓ Supplier upgradation✓ Quality check-lists	<ul style="list-style-type: none">✓ Trained engineers for IQC✓ FIFO implementation at IQC stage itself✓ Product-wise check-lists	<ul style="list-style-type: none">✓ 100% in-process testing for PCBs✓ Increasing degree of automation✓ Trained engineers✓ 4-hours full-load burn-in test	<ul style="list-style-type: none">✓ 100% EOLT for all products✓ Increasing degree of automation	<ul style="list-style-type: none">✓ Trained engineers✓ Product-wise check-lists
--	---	--	---	--	--



OEM STANDARDS TESTING FOR RIGOROUS INDIAN ENVIRONMENT

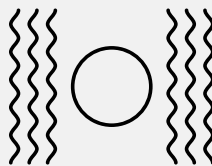
Products undergo 32 quality tests across 8 categories



High, low temp
-20 C to +70 C



Humidity test



Vibration test



Salt spray
corrosion test



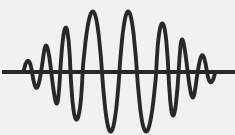
Short circuit,
reverse polarity



High, low
voltage test



Dust spray
test



Electromagnetic
interference test



QUALITY CERTIFIED PRODUCTS – BIS, ICAT, CE, ROHS

BIS approved

IS 13252



R-81016713





AWARDS & ACCREDITATIONS





AWARDS & ACCREDITATIONS



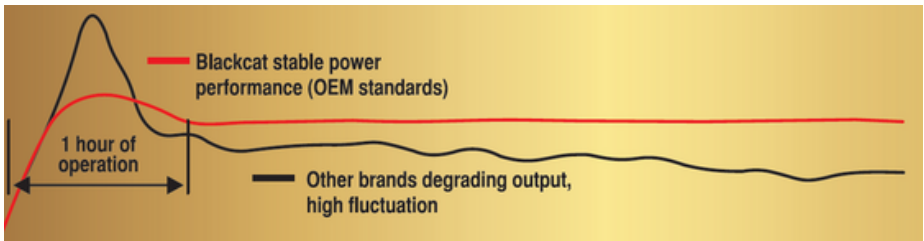


LED BULBS



LED HEADLAMP/ FOG LAMP BULBS

Performance as Committed!



Aviation grade Aluminum Alloy

OEM standard testing



OEM standard focused beam

2 years replacement warranty





90W



Technical Specs

- Reliability tests: As per OEM standard
- IP68 waterproof
- Colour: 6500K Ultra-white
- Operating voltage: 12V, 24V
- Brightness: 15,000 Lumen

Available in:

H1 (LED153)	H4/H19 (LED149)
H8 (LED152)	9005 (LED150)
H27 (LED095)	9012 (LED154)
	H7/ H18 (LED151)



120W



Technical Specs

- Reliability tests: As per OEM standard
- IP68 waterproof
- Colour: 6500K Ultra-white
- Operating voltage: 12V, 24V
- Brightness: 16,000 Lumen

Available in:

H1 (LED043)	H18 (LED047)
H4 (LED040)	9005 (LED044)
H7 (LED041)	9012 (LED045)
H8 (LED042)	



160W



Technical Specs

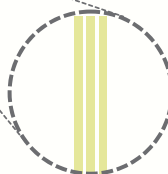
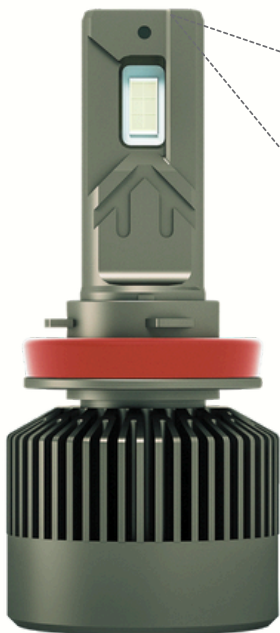
- Reliability tests: As per OEM standard
- IP68 waterproof
- Colour: 6500K Ultra-white
- Operating voltage: 12V, 24V
- Brightness: 19,000 Lumen

Available in:

H1 (LED074)	H18 (LED077)
H4 (LED075)	H19 (LED075)
H7 (LED077)	9005 (LED076)
H8 (LED088)	9012 (LED078)



180W



**3 Copper Tubes for
Maximum Cooling**

6500K

4300K

Technical Specs

- Reliability tests: As per OEM standard
- IP68 waterproof
- Colour: 6500K, 4300K
- Operating voltage: 12V, 24V
- Brightness: 20,000 Lumen

Available in:

6500K

H1 (LED025)
H4/19 (LED022)
H8/11 (LED024)
9012 (LED028)
9005 (LED027)
H7 (LED023)

4300K

H1 (LED107)
H4/19 (LED110)
H8/11 (LED108)
9012 (LED105)
9005 (LED106)
H7 (LED109)



220W



3 Copper Tubes for
Maximum Cooling

6500K

4300K



Technical Specs

- Reliability tests: As per OEM standard
- IP68 waterproof
- Colour: 6500K, 4300K
- Operating voltage: 12V, 24V
- Brightness: 21,000 Lumen

Available in:

6500K

H1 (LED130)
H4/19 (LED126)
H8/11 (LED129)
H9/16 (LED129)
9005 (LED128)
H7/18 (LED127)

4300K

H1 (LED120)
H4/19 (LED116)
H8/11 (LED119)
H9/16 (LED119)
9005 (LED118)
H7/18 (LED117)



260W



**3 Copper Tubes for
Maximum Cooling**

Technical Specs

- Reliability tests: As per OEM standard
- IP68 waterproof
- Colour: 6500K Ultra-white
- Operating voltage: 12V, 24V
- Brightness: 22,500 Lumen

Available in:

H1 (LED135)	H18 (LED138)
H4 (LED136)	H19 (LED136)
H7 (LED138)	9005 (LED137)
H8 (LED140)	9012 (LED139)



LED PROJECTOR FOG LIGHT



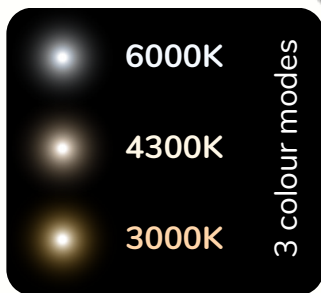
LAZER 2000



Laser-Cut
Optical Lens



OEM Grade
Beam



Technical Specs

- Laser cut optical lens: Yes
- Reliability tests: As per OEM standard
- IP68 waterproof
- Colour: 6000K, 4300K, 3000K
- Operating voltage: 12V, 24V
- Power per set: 120W (3"); 100W (2")

Available in:

3" size: PRL013

2" size: PRL014



AURA 1000



6000K Ultra-white



OEM Grade
Beam



Technical Specs

- Reliability tests: As per OEM standard
- IP68 waterproof
- Colour: 6000K ultrawhite
- Operating voltage: 12V, 24V
- Power per set: 100W (3"); 80W (2")

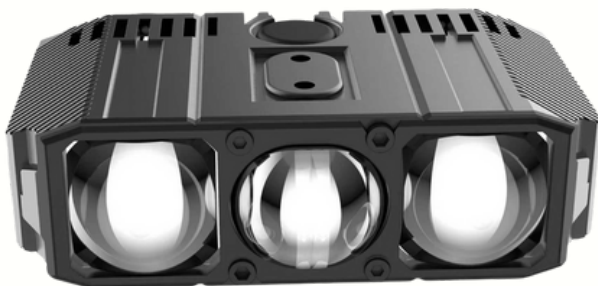
Available in:

3" size: PRL015

2" size: PRL016



AUX-TRIDENT (PRL021)



6000K Ultra-white



Technical Specs

- Reliability tests: As per OEM standard
- IP68 waterproof
- Colour: 6000K ultrawhite
- Operating voltage: 12V, 24V

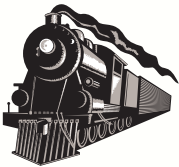


MOBILE CHARGERS



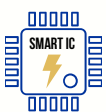
100000000+ Chargers Sold

Chargers for all applications



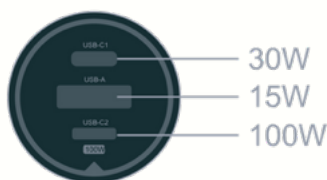
Certified Quality

Latest Tech





HYPERMAXX 130 (CHG062)



Total Output 130W

130W

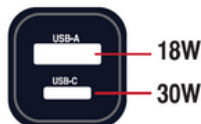


Why select HyperMaxx 130?

- The most powerful charger - can charge even a laptop!
- Up to 100W (port C1) + 30W (port C2) or 15W + 15W on port C2, USB-A
- 2 x C-type ports, 1x USB-A port
- Cutting-edge tech with USB-C Power Delivery and Qualcomm.
- Operating voltage: 12V, 24V.



ZAPMAXX 48 (CHG065)



48W



FAST CHARGING



50K CYCLES
TESTED



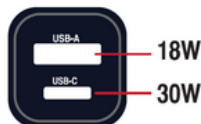
8 PROTECTIONS

Why select ZapMaxx 48?

- Cutting-edge tech with USB-C Power Delivery and Qualcomm.
- USB-C: Up to 11Vx3A; USB-A: 12Vx1.5A; 9Vx2A; USB-C + USB-A: Up to 48W
- Ambient LED backlight
- Advanced protection against overheat, short-circuit, low voltage
- Operating voltage: 12V, 24V



EDGE 48 (CHG095)



48W



FAST CHARGING



50K CYCLES
TESTED



8 PROTECTIONS

Why select Edge 48?

- Cutting-edge tech with USB-C Power Delivery and Qualcomm.
- USB-C: Up to 11Vx3A; USB-A: 12Vx1.5A; 9Vx2A; USB-C + USB-A: Up to 48W
- Ambient LED backlight
- Advanced protection against overheat, short-circuit, low voltage
- Operating voltage: 12V, 24V



JIFFY 30W (CHG052)



FAST CHARGING



50K CYCLES
TESTED



8 PROTECTIONS

Why select Jiffy 30W charger?

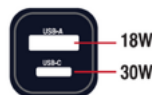
- Approved by major OEMs
- Market leading product
- USB-C: Up to 5Vx3A; USB-A: Up to 5Vx3A; USB-C + USB-A: 30W
- Operating voltage: 12V, 24V

*Jiffy 30W with 3-in-1 cable: CHG055



TURBOCV-O 48 (CHG069)

48W



OVERHEAT
PROTECTION



SUITABLE FOR BUSES,
TEMPO TRAVELLERS,
SEDAN/ SUV REAR SEAT



USB-C & USB-A



QC & PD
TECHNOLOGY

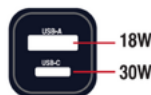
Why select TurboCV-O 48W charger?

- Concealed design, replaces standard cigarette lighter socket in the vehicle
- Market-leading product for commercial vehicles/ armrest
- USB-C: Up to 11Vx3A; USB-A: 12Vx1.5A; 9Vx2A; USB-C + USB-A: Up to 48W
- Cutting-edge tech with USB-C Power Delivery and Qualcomm
- Operating voltage: 12V, 24V
- Customised wiring harness available (if needed)



TURBOCV-F 48 (CHG070)

48W



OVERHEAT
PROTECTION



SUITABLE FOR BUSES,
TEMPO TRAVELLERS,
SEDAN/ SUV REAR SEAT



USB-C & USB-A



QC & PD
TECHNOLOGY

Why select TurboCV-F 48W charger?

- Flat design enables easy installation in tight slots as well
- Market-leading product for commercial vehicles/ armrest
- USB-C: Up to 11Vx3A; USB-A: 12Vx1.5A; 9Vx2A; USB-C + USB-A: Up to 48W
- Cutting-edge tech with USB-C Power Delivery and Qualcomm
- Operating voltage: 12V, 24V
- Customised wiring harness available (if needed)



CV PD-QC CHARGER (CHG058)

48W



OVERHEAT
PROTECTION



SUITABLE FOR BUSES,
TEMPO TRAVELLERS,
SEDAN/ SUV REAR SEAT



USB-C & USB-A



QC & PD
TECHNOLOGY

Why select CV PD-QC fast charger?

- Flat design enables easy installation where hole/space availability is an issue
- Market-leading product for commercial vehicles/ armrest
- USB-C: Up to 11Vx3A; USB-A: 12Vx1.5A; 9Vx2A; USB-C + USB-A: Up to 48W
- Cutting-edge tech with USB-C Power Delivery and Qualcomm
- Operating voltage: 12V, 24V
- Customised wiring harness available (if needed)



CV CHARGER FLAT (SBA114)



SUITABLE FOR
COMMERCIAL VEHICLES



FAST CHARGING



50K CYCLES
TESTED



8 PROTECTIONS

Why select Blackcat CV Charger Flat?

- Flat design enables easy installation in tight slots as well
- Sleek, elegant design with premium-looking backlit blue LED
- Market-leading product for commercial vehicles
- Dual USB port
- Operating current: up to 3.1A
- Operating voltage: 12V, 24V
- ICAT homologation approved



CV CHARGER (CHG001)



SUITABLE FOR
COMMERCIAL VEHICLES



FAST CHARGING



50K CYCLES
TESTED



8 PROTECTIONS

Why select Blackcat CV Charger?

- Suitable for arm-rests fitment in SUVs
- Market-leading product for commercial vehicles and SUVs
- Concealed design, replaces standard cigarette lighter socket in the vehicle
- Operating current: up to 3.1A
- Operating voltage: 12V, 24V
- ICAT homologation approved



CV CHARGER A+C (CHG101)



SUITABLE FOR
COMMERCIAL VEHICLES



FAST CHARGING



50K CYCLES
TESTED



8 PROTECTIONS

Why select Blackcat CV Charger?

- Market-leading product for commercial vehicles and SUVs
- Type C + USB-A dual port charging up to 15W
- Concealed design, replaces standard cigarette lighter socket in the vehicle
- Operating current: up to 3.1A
- Operating voltage: 12V, 24V



CV CHARGER C+C (CHG102)



SUITABLE FOR
COMMERCIAL VEHICLES



FAST CHARGING



50K CYCLES
TESTED



8 PROTECTIONS

Why select Blackcat CV Charger?

- Type C + USB-C dual port charging up to 15W
- Market-leading product for commercial vehicles and SUVs
- Concealed design, replaces standard cigarette lighter socket in the vehicle
- Operating current: up to 3.1A
- Operating voltage: 12V, 24V



4-IN-1 PD CABLE (CHG057)

60W



Laptop charging

60W

60W



1.2 Metre
Cable Length



Quick Charging



High Quality
Connectors

Why select Blackcat 4-in-1 PD Cable?

- Fastest charging cable with up to 60W capacity - it can even charge a laptop!
- High quality premium alloy connectors for USB-C, lightning port, USB-A - for high speed charging, long life operation.
- 4 operation modes: C to C, C to lightning, USB-A to lightning, USB-A to C
- Nylon braided, tangle free, rugged and laboratory tested for extreme bend tests



4-IN-1 ARMOUR-CHARGE (CHG093)

66W



Laptop charging



Tangle-free

Why select Blackcat 4-in-1 Armour-Charge Cable?

- Fastest charging cable with up to 66W capacity - it can even charge a laptop!
- High quality premium alloy connectors for USB-C, lightning port, USB-A - for high speed charging, long life operation.
- 4 operation modes: C to C, C to lightning, USB-A to lightning, USB-A to C
- Nylon braided, tangle free, rugged and laboratory tested for extreme bend tests



C-C CHARGING CABLE (CHG074)

60W



Laptop charging



For maximum strength

60W

60W



1 metre
Cable length



Quick Charging



High Quality
Connectors

Why select Blackcat C-C charging Cable?

- High quality premium alloy connectors for high speed charging, long life operation.
- This cable is made of High-quality Silicon material and 100% pure copper which makes it resistant to fraying and wear-related damage, more flexible and durable
- Cable is Tangle Free, Rugged, Quick charging, universally compatible, Flexible and of High Quality



ZAPFOLD 3-IN-1 CABLE (CHG073)



**3A Fast
Charging**

Why select Blackcat ZapFold 3-in-1 Cable?

- This universal cable can simultaneously charge Type C, iOS and micro-USB port devices.
- This universal cable is made of high-quality PVC material, making it resistant to fraying and wear-related damage, more flexible and durable.
- The 3-in-1 charging cable is retractable, tangle-free, rugged, quick charging, universally compatible, flexible, and of high quality.
- Self-retracting mechanism makes it easy to manage



3-IN-1 CABLE (SBA073)



**3A Fast
Charging**



3A CURRENT



1.2 METRE
CABLE LENGTH



QUICK CHARGING



HIGH QUALITY
CONNECTORS

Why select Blackcat 3-in-1 TPE Cable?

- This universal cable can simultaneously charge Android, iOS, and Type C devices.
- This universal cable is made of high-quality TPE material, making it resistant to fraying and wear-related damage, more flexible and durable.
- The 3-in-1 charging cable is tangle-free, rugged, quick charging, universally compatible, flexible, and of high quality.
- OEM tested and approved for safety, speed and reliability.



AMBIENT MOOD LIGHTING



VIBE AMBIENT MOOD LIGHT



10,000 hrs LED life



-20 to +70 degree tested

Ordering info:

SBA448: Vibe Ice White

SBA445: Vibe Cool



ANDROID INFOTAINMENT



PRO1000 LICENSED - AND009

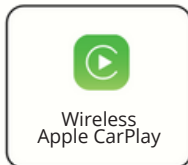


Turbo Performance

- ✓ INSTANT TOUCH RESPONSE
- ✓ QUICK APP SWITCH
- ✓ STABLE OPERATION
- ✓ MORE FUN WITH TECH



360° Camera
Compatible



Wireless
Apple CarPlay



Wireless
android auto



Front & Rear
DVR Compatible



9" Q-LED SCREEN



BLUETOOTH
5.1



SPEAKER OUTPUT:
4*50 WATT



RUGGED TESTING:
-20°C TO +70°C



48 EQ
SEGMENT DSP





PRO2000 LICENSED



Turbo Performance

- ☒ INSTANT TOUCH RESPONSE
- ☒ QUICK APP SWITCH
- ☒ STABLE OPERATION
- ☒ MORE FUN WITH TECH



360° Camera Compatible



Front & Rear
DVR Compatible



Wireless
Apple CarPlay



Wireless
android auto

Key Specs

- MTK-8257 (AC8257) Octa-Core
- 8x ARM Cortex-A53 (up to 2.5GHz)
- RAM: 2GB/ 4GB; Memory: 32GB/ 64GB

Ordering info:

AND025: 9" MTK 2x32

AND035: 9" MTK 2x64

AND027: 9" MTK 4x64



T5 PRO



360° Camera Compatible



Front & Rear
DVR Compatible



Wireless
Apple CarPlay



Wireless
androidauto

Key Specs

- T6 Cortex A53 4+4 Core 1.5GHz
- RAM: 2GB/ 4GB; Memory: 32GB/ 64GB
- Screen size: 9"/ 10.1"

Ordering info:

AND010: 9" T5-Pro 2x32
AND033: 9" T5-Pro 2x64
AND011: 9" T5-Pro 4x64
AND014: 10" T5-Pro 2x32



Q-LED SCREEN



BLUETOOTH
5.1



SPEAKER OUTPUT:
4*45 WATT



RUGGED TESTING:
-20°C TO +70°C



32 EQ
SEGMENT DSP



T5-100



Wireless
Apple CarPlay



Wireless
androidauto

Key Specs

- T100 Cortex A53 4+4 Core 1.5GHz
- RAM: 2/4GB; Memory: 32/ 64GB
- Screen size: 9"/ 10.1"

Ordering info:

AND029: 9" T5-100 2x64

AND031: 9" T5-100 4x64

AND013: 10" T5-100 2x32



Q-LED SCREEN



BLUETOOTH
5.1



SPEAKER OUTPUT:
4*45 WATT



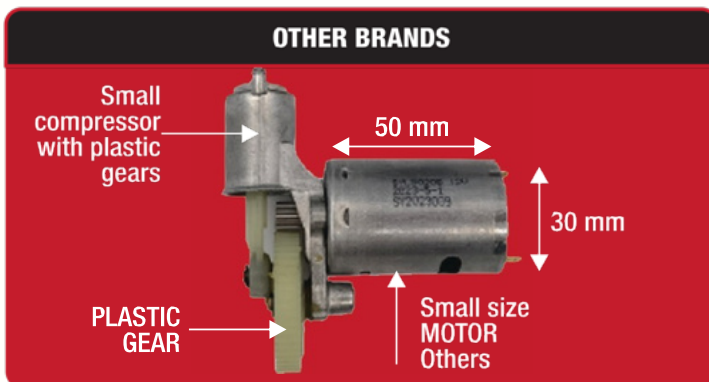
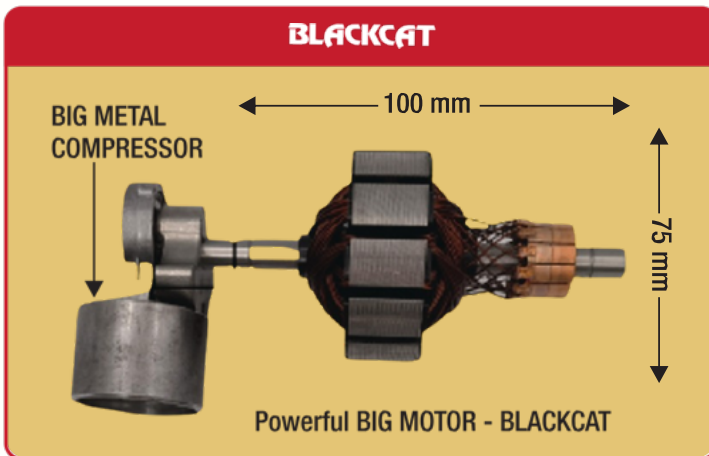
RUGGED TESTING:
-20°C TO +70°C



TYRE INFLATORS



Why are Blackcat tyre inflators faster?
Because they are built **better!**





ALPHA WIRELESS INFLATOR (INFO13)



Wireless



**DIGITAL
GAUGE**

AUTO CUT OFF



Emergency
Power bank
6000 mAH



Preset tyre
pressure



5 modes



Accurate pressure
measurement



Metal Shell



SOS warning lamp
/Lighting



In-built memory
(tyre pressure)



HERCULES² (INF027)



2 cylinders



Inflates in
<2 minutes



PREMIUM COPPER
WINDING MOTOR FOR
LONG LIFE



NO JACK REQUIRED
TO INFLATE



METAL
STURDY METAL
BODY



THICK, BRAIDED,
HOSE

Why select Hercules²?

- ▶ Powerful 180W twin-cylinder inflator: fills up SUV/Sedan R15 tyre in under 2 minutes
- ▶ Twin cylinder design fills air in half the time
- ▶ Rubber pads for low-noise operation
- ▶ Threaded Spring Valve for faster & leak-proof inflation
- ▶ Superior build quality that inflates 4 tyres without over-heating
- ▶ Operating voltage: 12V DC
- ▶ 1 Year Warranty with Lifelong customer support.



HERCULES X (INFO11)



PREMIUM COPPER
WINDING MOTOR FOR
LONG LIFE



NO JACK REQUIRED
TO INFLATE



QUICK HEAT
DISSIPATION



SLEEK, LIGHTWEIGHT
& EASY TO STORE



THICK, BRAIDED,
HEAT PROOF

Why select Hercules-X?

- 150W, 150 psi powerful inflator; Operating voltage: 12V DC
- Threaded Spring Valve for faster & leak-proof inflation
- 10ft (3.3m) long wire
- Bright LED torch-light
- Superior build quality ensures continuous inflation of all 4 tyres, without risk of overheating/motor failure
- 1 Year Warranty with Lifelong customer support.



HERCULES SMART DIGI (INF016)



PREMIUM COPPER
WINDING MOTOR FOR
LONG LIFE



NO JACK REQUIRED
TO INFLATE



QUICK HEAT
DISSIPATION



SLICK, LIGHTWEIGHT
& EASY TO STORE



THICK, BRAIDED,
HEAT PROOF

Why select Hercules Smart Digi?

- Digital gauge with auto cut-off; 100W operating power; up to 100 psi pressure
- Threaded Spring Valve for faster & leak-proof inflation
- 10ft (3.3m) long wire; Operating voltage: 12V DC
- Bright LED torch-light
- Superior build quality ensures continuous inflation of all 4 tyres, without risk of overheating/motor failure
- 1 Year Warranty with Lifelong customer support.



HERCULES SMART (INFO10)



PREMIUM COPPER
WINDING MOTOR FOR
LONG LIFE



NO JACK REQUIRED
TO INFLATE



QUICK HEAT
DISSIPATION



SLEEK, LIGHTWEIGHT
& EASY TO STORE



THICK, BRAIDED,
HEAT PROOF

Why select Hercules Smart?

- Compact and lightweight; 100W operating power; up to 100 psi pressure
- Threaded Spring Valve for faster & leak-proof inflation
- 10ft (3.3m) long wire; Operating voltage: 12V DC
- Bright LED torch-light
- Superior build quality ensures continuous inflation of all 4 tyres, without risk of overheating/motor failure
- 1 Year Warranty with Lifelong customer support.



HERCULES (INF026)



PREMIUM COPPER
WINDING MOTOR FOR
LONG LIFE



NO JACK REQUIRED
TO INFLATE.



STURDY METAL
BODY



THICK, BRAIDED,
HOSE

Why select Hercules?

- Rubber pads for low noise operation
- Threaded Spring Valve for faster & leak-proof inflation
- Superior build quality that inflates 4 tyres without over-heating
- Sturdy Metal Body
- 1 Year Warranty with Lifelong customer support.
- 150 psi, 180W, 12V DC operating voltage



LILIPUT 2.0 (INF028)



PREMIUM COPPER
WINDING MOTOR FOR
LONG LIFE



NO JACK REQUIRED
TO INFLATE



QUICK HEAT
DISSIPATION



SLICK, LIGHTWEIGHT
& EASY TO STORE



THICK, BRAIDED,
HEAT PROOF

Why select Liliput 2.0?

- More than 1 lac happy customers
- Threaded Spring Valve for faster & leak-proof inflation
- 10ft (3.3m) long wire
- Superior build quality ensures continuous inflation of all 4 tyres, without risk of overheating/ motor failure
- Power: up to 96W
- 1 Year Warranty with Lifelong customer support.



BLACKCAT.

SMART MOBILITY SOLUTIONS

VACUUM CLEANERS



ALPHA WIRELESS VACUUM CLEANER (INF014)



Wireless



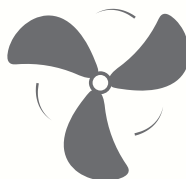
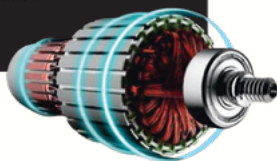
3 Speed
Modes



6000 mAH
Battery



Pure copper winding motor
and aluminum fan for maximum
heat dissipation and long
continuous operation



Metal fan: maximum cooling,
long continuous operation

SPECIFICATIONS

Voltage	12V DC
Suction Power	8 000PA
Rated Power	85W



VACUUM CLEANER HD (INF012)



PREMIUM COPPER
WINDING MOTOR FOR
LONG LIFE



POWERFUL
SUCTION



LIGHTWEIGHT

Why select Vacuum Cleaner HD?

- Wet & Dry is powerful vacuum cleaner for Cars & SUVs. 5,500Pa suction power. Cyclonic action keeps the filter clean and suction power constant.
- Designed for India: Ideal for dust, cigarette ash, spilled food & drink
- 5 attachments give you the flexibility to clean all corners and all types of spillage
- A powerful motor with Copper winding ensures high suction power with the the promise of long life
- 1-year warranty against manufacturing defects.



CENTRAL LOCKING SYSTEMS



CENTRAL LOCKING SYSTEM NSA



Why select Blackcat Central Locking Systems?

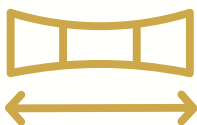
- High decibel alarm 110dB
- NSA 4D: suitable for all cars
- NSA 1D: suitable for cars where driver door lock controls locking/ unlocking of other door locks
- OEM-style remote designs
- 3 years warranty, lifelong support



**REVERSE
CAMERA**



AHD STRAWHAT CAMERA (RC02/RC03)



Wide angle view



✓ Number plate mounting

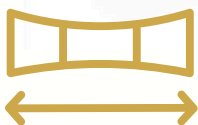
✓ 170° (RC03)/120° (RC02) viewing angle

✓ IP68 protection for dust and water

✓ Night-vision with photosensitive chip



AHD BUMPER CAMERA (RC01)



Wide angle view



✓ Seamless mounting with bumper

✓ 170° / 120° viewing angle

✓ IP68 protection for dust and water

✓ Night-vision with photosensitive chip



BUS CAMERA (RCS035)



CAMERA TECH SPECS

Camera type	AHD
Camera resolution	640x480
Camera night vision supported (Y/N)	Y
Camera waterproofing	IP68

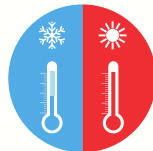




MONITORS



FLIP-DOWN MONITOR



Rugged testing
-20°C to +70°C

IS 13252



BIS approved



R-81016713

TECHNICAL SPECIFICATION	
Operating Voltage	12V DC/ 24V DC
Current	2.0 ± 0.1A
Video Formats	PAL/NTSC
Aspect Ratio	16:9
Resolution	1366X768 RGB

Variant
Beige 19"
Black 19"

Part No.
SBA085
SBA083



CAR FRIDGE



CB-18 (FRG017)



PROFESSIONAL COOLING
PRODUCT, DESIGNED FOR
THE INDIAN CONDITIONS.



FRIDGE-FREEZER



LOW POWER
CONSUMPTION



OPERATES FROM A CAR
CIGARETTE LIGHTER
SOCKET

Why select CB-18?

- Smart engineering and efficient manufacturing ensure affordable pricing
- Can deep freeze up to -18°C
- Connect the fridge to vehicle's cigarette lighter socket (12V or 24V DC) or your domestic plug point (230V AC)
- Consumes power lesser than a headlight lamp
- Genuine accessory approved by European OEM car manufacturer

Suitable for cars, camping, cold chain delivery of meat, ice cream, dairy products, storing and transporting medical kits, bio samples, blood bags, plasma samples, vaccines etc.



MCG-15 (FRG005)



PROFESSIONAL COOLING
PRODUCT, DESIGNED FOR
THE INDIAN CONDITIONS.



FRIDGE-FREEZER



LOW POWER
CONSUMPTION



OPERATES FROM A CAR
CIGARETTE LIGHTER
SOCKET

Why select MCG15?

- Smart engineering and efficient manufacturing ensure affordable pricing
- Can deep freeze up to -18°C regardless of the outside temperature
- Connect the fridge to vehicle's cigarette lighter socket (12V or 24V DC)
- Consumes power lesser than a headlight lamp
- Genuine accessory approved by European OEM car manufacturer



**OEM EXCLUSIVE
PRODUCTS
& SUB-ASSEMBLIES**



MAGNETIC/ CLIP SUNSHADES



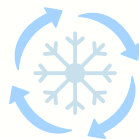
Protection from harmful UV rays



Strong neodymium magnets



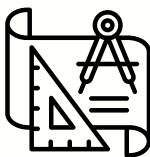
Rust-proof spring-steel construction



Improve AC cooling (up to 5°C)

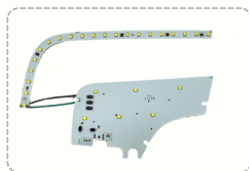


Compliant with regulatory standards for visibility

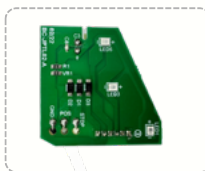


Car-specific models for optimal performance

LED SUB-ASSEMBLIES



Sedan tail-light



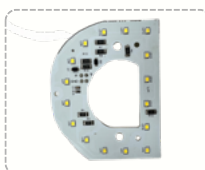
Scooter tail-light



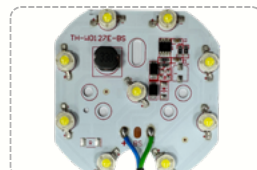
13" Bar-light



Motorcycle tail-light



SUV tail-light



Work lamp



Motorcycle headlight
DRL



Motorcycle headlight
DRL



Motorcycle headlight
DRL



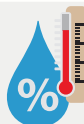
Luminous flux
test



Electrical stress
tests



Endurance tests



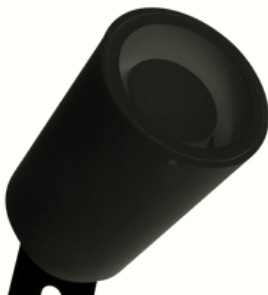
Environmental
tests



REVERSE SIREN/ BUZZER



- 110dB
- 12V/ 24V DC
- IP67 (1 metre under water)
- 100% line fitment in earth mover, construction equipment, mining trucks
- Magnet based sound source



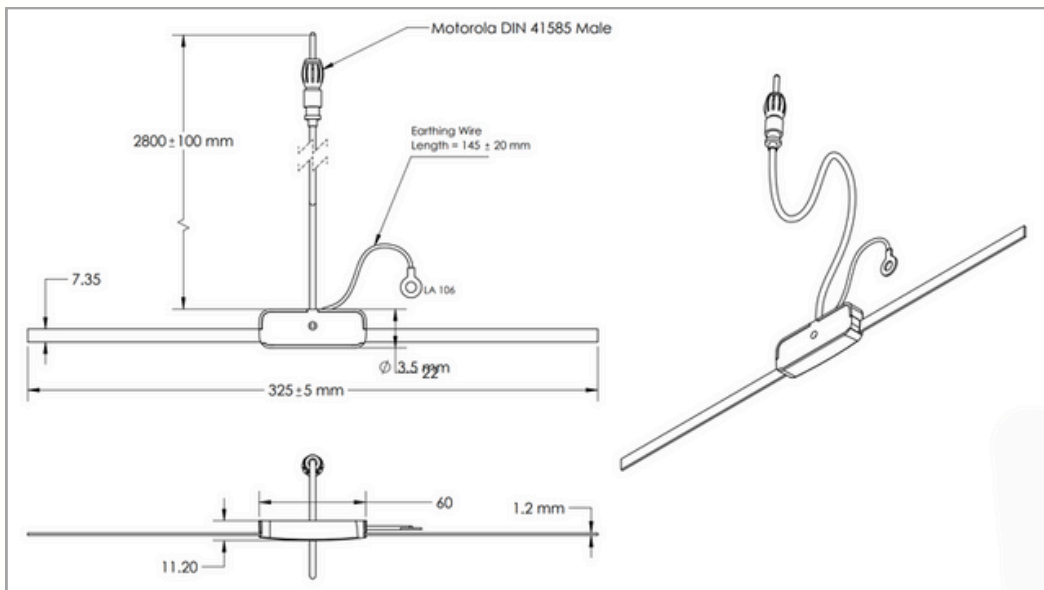
- 90dB
- 12V/ 24V DC
- IP67 (1 metre under water)
- 100% line fitment in trucks
- Piezo based sound source



- RPAS reverse warning beep
- 50dB
- 12V/ 24V DC
- In-cabin installation
- Piezo based sound source



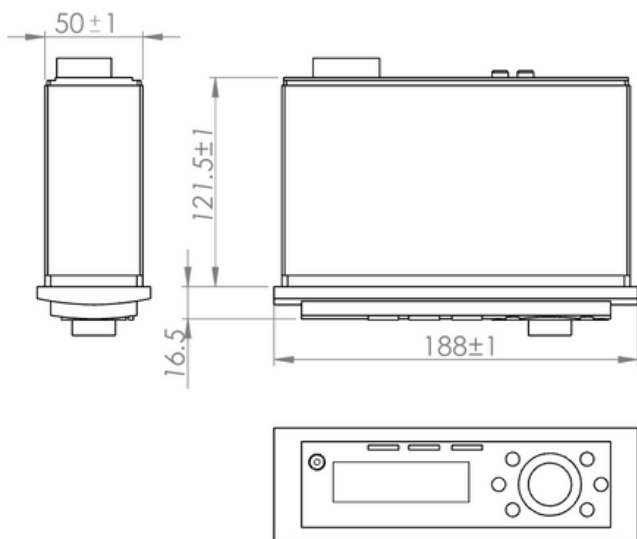
ELECTRONIC ANTENNA



- Windshield glass mounting
- Radio FM 87.5 - 108.0 MHz
- Adhesive tape mounting
- Suitable for truck, bus, MUVs, minibus



1-DIN STEREO & SPEAKER ASSY



Features and Specifications

General

Rated voltage	12V DC
Operating voltage	10.5 - 14V DC
FM Tuner MP3 Files	Yes
Reader Front	Yes
Audio Aux-in USB	Yes
Port	Yes
SD Input	Yes
Bluetooth	Yes
Max Current Consumption	15A
Peak Output Power	4 x 45W

FM Tuner

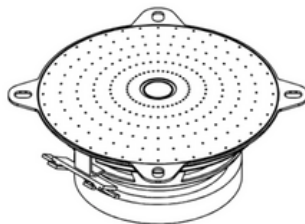
Frequency Range	87.5-108.0MHz
No. of Presets	18
Frequency Response	40Hz~15KHz(±3dB)
USB, AUX	Yes

Audio Amplifier

Peak Output Power	45W
Power Output	20W
Load Impedance	4 ohms

SPECIFICATIONS

SPEAKER CONE MATERIAL	PAPER PULP/ PP
PEAK INPUT POWER	45W
RATED INPUT POWER	15W
IMPEDANCE	4 ohms +/-10%
FREQUENCY RESPONSE	Fo ~ 20kHz
OPERATING TEMPERATURE	+60°C ~ -20°C





NOTES

A series of horizontal dotted lines for taking notes, spanning the width of the page.



NOTES

A series of horizontal dotted lines for taking notes, spanning the width of the page.



Bajaj Communications Pvt Ltd
Bajaj Autotronix India Pvt Ltd



0124-4555843



info@blackcat.in



www.blackcat.in



D-64, Udyog Vihar Ph-6,
Sector-37, Gurgaon-122001



9899-0555-88



/BlackcatIND



/Blackcat.estd1993



/Blackcat_In