

ATTITUDE CONTROL SYSTEMS



Our XACT and FleXcore products are currently operating on-orbit, supporting numerous successful customer missions. Get a reliable, high-performance design compatible with a wide range of satellite configurations, all from the most accurate stellar-based attitude solutions. US-made and applicable for DOD applications.

DESIGN

A powerful processing core coupled with our reaction wheel assemblies enable a new generation of peak-performance, cost-efficient miniaturized spacecraft. Configurations allow for a standard three-wheel system with the addition of a fourth wheel for redundancy. The addition of our torque rods and sun sensors further provides a robust and effective ADCS system.

KEY ADVANTAGES

- Precise attitude knowledge & control
- Complete ACS in a micro-package
- Low jitter micro-reaction wheel design
- User-friendly software supports simulation, integration, and customization

BASELINE DELIVERABLES

- User Manual
- Interface Control Documentation
- Command & Telemetry Handbook
- Functional and Performance Test Results
- Certificate of Conformance (Flight Units Only)
- Mission Configuration ICD Addendum

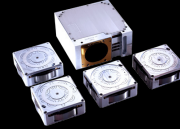
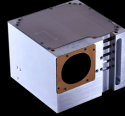
XACT SYSTEM DIMENSIONS



XACT-15
10 x 10 x 5 cm
(0.5U)



XACT-50
10 x 10 x 7.54 cm
(0.75U)



PERFORMANCE

	XACT-15	XACT-50	XACT-100	FLEXCORE
MOMENTUM STORAGE	15 mNms	50 mNms	100 mNms	RWp500: 500 mNms RW1: 1 Nms RW4: 4 Nms RW8: 8 Nms
MAX TORQUE	0.004 Nm	0.007 Nm	0.004 - 0.007 Nm	RWp500: 0.025 Nm RW1: 0.06 Nm RW4: 0.25 Nm RW8: 0.25 Nm
SLEW RATE	Up to 10 deg/sec (4kg, 3U CubeSat)	Up to 10 deg/sec (14kg, 6U CubeSat)	Up to 10 deg/sec (25kg, 12U CubeSat)	Application Dependent
POINTING ACCURACY (1-sigma)		±10.8 arcsec for 2 axes; ±25.2 arcsec for 3rd axis		±7.2 for 3 axes, 2 Trackers
SLEWING CROSSBORESIGHT ERROR (@ 1 deg/sec) (1-sigma)		Gen 2: 15 arcsec		Gen 2: 15 arcsec Gen 3: 5 arcsec
SLEWING AROUNDBORESIGHT ERROR (@ 1 deg/sec) (1-sigma)		Gen 2: 200 arcsec		Gen 2: 200 arcsec Gen 3: 32 arcsec

MECHANICAL INTERFACE

DIMENSIONS	10 x 10 x 5 cm (0.5U)	10 x 10 x 7.54 cm (0.75U)	10 x 10 x 5 cm (0.5U) not including external components	< 12.1 x 11.4 x 4.9 cm not including external components
MASS	0.885 kg	1.23 kg	0.520 kg + 1 kg (wheels)	Configuration Dependent

ELECTRICAL INTERFACE

SUPPLY VOLTAGE	12V			5V and 28V
AVERAGE POWER CONSUMPTION	3 wheels: 2.82 W / 4 wheels: 2.97 W			12.25 W
PEAK POWER	3 wheels: 6.74 W / 4 wheels: 7.59 W			16.25 W
INTERFACE	RS-422			

ENVIRONMENTAL CONDITIONS

OPERATING TEMPERATURE	-20°C to +60°C
SURVIVAL TEMPERATURE	-30°C to +70°C
RADIATION HARDNESS (Si)	> 40 Krad
VIBRATION QUALIFICATION	14.1 Grms
DESIGN LIFE	> 10 years (LEO) > 5 years (GEO)



2550 Crescent Drive
Lafayette, CO 80026

BLUECANYONTECH.COM